

## Product datasheet

# Anti-RFT1 antibody ab81536

1 Image

### Overview

|                            |   |
|----------------------------|---|
| <b>Product name</b>        | Anti-RFT1 antibody  |
| <b>Description</b>         | Rabbit polyclonal to RFT1   |
| <b>Host species</b>        | Rabbit  |
| <b>Tested applications</b> | <b>Suitable for:</b> WB, ELISA  |
| <b>Species reactivity</b>  | <b>Reacts with:</b> Human<br><b>Predicted to work with:</b> Mouse, Rat, Rabbit, Horse, Chicken, Guinea pig, Cow, Cat, Dog   |
| <b>Immunogen</b>           | Synthetic peptide, corresponding to a region within internal sequence amino acids 73-122 (GTQRDWSQTL NLLWLTVP LG VFWSLFLGWI WLQLLEVPDP NVVPHYATGV) of Human RFT1 (Accession number: NP_443091)<br><a href="#">Run BLAST with ExPASy</a> <a href="#">Run BLAST with NCBI</a> |
| <b>Positive control</b>    | HepG2 cell lysate   |

### Properties

|                             |   |
|-----------------------------|---|
| <b>Form</b>                 | Liquid  |
| <b>Storage instructions</b> | Shipped at 4°C. Upon delivery aliquot and store at -20°C or -80°C. Avoid repeated freeze / thaw cycles. |
| <b>Storage buffer</b>       | Preservative: None<br>Constituents: 2% Sucrose, PBS   |
| <b>Purity</b>               | Immunogen affinity purified   |
| <b>Clonality</b>            | Polyclonal  |
| <b>Isotype</b>              | IgG   |

### Applications

Our [Abpromise guarantee](#) covers the use of **ab81536** in the following tested applications.

The application notes include recommended starting dilutions; optimal dilutions/concentrations should be determined by the end user.

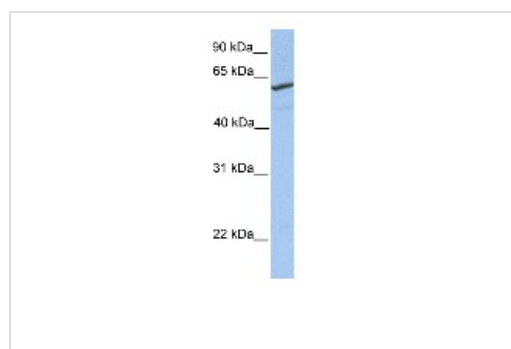
| Application | Abreviews | Notes |
|-------------|-----------|-------|
|             |           |       |

| Application | Abreviews | Notes  |
|-------------|-----------|--|
| WB          |           | Use a concentration of 1 µg/ml. Predicted molecular weight: 60 kDa. Good results were obtained when blocked with 5% non-fat dry milk in 0.05% PBS-T. |
| ELISA       |           | Use at an assay dependent concentration.<br>ELISA titre using peptide based assay: 1:1562500.  |

## Target

|                              |   |
|------------------------------|---|
| <b>Relevance</b>             | May be involved in N-linked oligosaccharide assembly. May participate in the translocation of oligosaccharide from the cytoplasmic side to the luminal side of the endoplasmic reticulum membrane |
| <b>Cellular localization</b> | Cell Membrane   |

## Images



Western blot - RFT1 antibody (ab81536)

Anti-RFT1 antibody (ab81536) at 1 µg/ml (in 5% skim milk / PBS buffer) + HepG2 cell lysate at 10 µg

### Secondary

HRP conjugated anti-Rabbit IgG at 1/50000 dilution

**Predicted band size:** 60 kDa

**Observed band size:** 60 kDa

**Please note:** All products are "FOR RESEARCH USE ONLY AND ARE NOT INTENDED FOR DIAGNOSTIC OR THERAPEUTIC USE"

## Our Abpromise to you: Quality guaranteed and expert technical support

- Replacement or refund for products not performing as stated on the datasheet
- Valid for 12 months from date of delivery
- Response to your inquiry within 24 hours
- We provide support in Chinese, English, French, German, Japanese and Spanish
- Extensive multi-media technical resources to help you
- We investigate all quality concerns to ensure our products perform to the highest standards

If the product does not perform as described on this datasheet, we will offer a refund or replacement. For full details of the Abpromise, please visit <http://www.abcam.com/abpromise> or contact our technical team.

## Terms and conditions

---

- Guarantee only valid for products bought direct from Abcam or one of our authorized distributors