

## Product datasheet

# Anti-RP105 antibody ab45430

[3 Images](#)

### Overview

<b>Product name</b>	Anti-RP105 antibody
<b>Description</b>	Rabbit polyclonal to RP105
<b>Host species</b>	Rabbit
<b>Tested applications</b>	<b>Suitable for:</b> IHC-P, ICC/IF, WB
<b>Species reactivity</b>	<b>Reacts with:</b> Mouse, Human
<b>Immunogen</b>	Synthetic 14 amino acid peptide from near the center of human RP105.
<b>Positive control</b>	Human spleen tissue lysate.

### Properties

<b>Form</b>	Liquid
<b>Storage instructions</b>	Shipped at 4°C. Store at +4°C.
<b>Storage buffer</b>	Preservative: 0.02% Sodium Azide Constituents: PBS
<b>Purity</b>	Immunogen affinity purified
<b>Clonality</b>	Polyclonal
<b>Isotype</b>	IgG

### Applications

Our [Abpromise guarantee](#) covers the use of **ab45430** in the following tested applications.

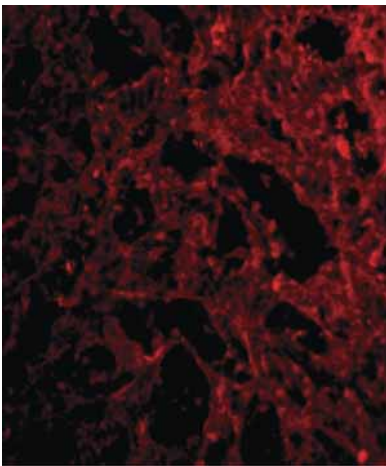
The application notes include recommended starting dilutions; optimal dilutions/concentrations should be determined by the end user.

Application	Abreviews	Notes
IHC-P		Use a concentration of 2 µg/ml.
ICC/IF		Use a concentration of 20 µg/ml.
WB		Use a concentration of 0.5 - 1 µg/ml. Predicted molecular weight: 74 kDa.

## Target

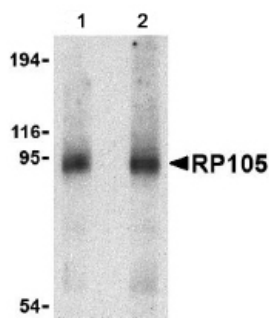
<b>Function</b>	May cooperate with MD-1 and TLR4 to mediate the innate immune response to bacterial lipopolysaccharide (LPS) in B-cells. Leads to NF-kappa-B activation. Also involved in the life/death decision of B-cells.
<b>Tissue specificity</b>	Expressed mainly on mature peripheral B cells. Detected in spleen, lymph node and appendix. Not detected in pre-B and -T cells.
<b>Sequence similarities</b>	Belongs to the Toll-like receptor family. Contains 19 LRR (leucine-rich) repeats. Contains 1 LRRCT domain.
<b>Cellular localization</b>	Cell membrane.

## Images



Immunofluorescence of RP105 in Human spleen tissue with ab45430 at 10 ug/mL.

Immunocytochemistry/ Immunofluorescence - Anti-RP105 antibody (ab45430)



**Lane 1** : Anti-RP105 antibody (ab45430) at 0.5 µg/ml

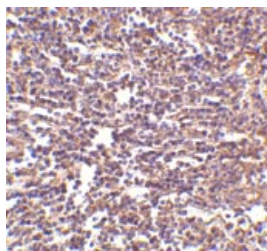
**Lane 2** : Anti-RP105 antibody (ab45430) at 1 µg/ml

**All lanes** : Human spleen tissue lysate

Lysates/proteins at 15 µg per lane.

Western blot - Anti-RP105 antibody (ab45430)

**Predicted band size:** 74 kDa



ab45430 at 2 $\mu$ g/ml staining RP105 in human spleen tissue by IHC

Immunohistochemistry (Formalin/PFA-fixed paraffin-embedded sections) - Anti-RP105 antibody (ab45430)

**Please note:** All products are "FOR RESEARCH USE ONLY AND ARE NOT INTENDED FOR DIAGNOSTIC OR THERAPEUTIC USE"

### Our Abpromise to you: Quality guaranteed and expert technical support

---

- Replacement or refund for products not performing as stated on the datasheet
- Valid for 12 months from date of delivery
- Response to your inquiry within 24 hours
- We provide support in Chinese, English, French, German, Japanese and Spanish
- Extensive multi-media technical resources to help you
- We investigate all quality concerns to ensure our products perform to the highest standards

If the product does not perform as described on this datasheet, we will offer a refund or replacement. For full details of the Abpromise, please visit <http://www.abcam.com/abpromise> or contact our technical team.

### Terms and conditions

---

- Guarantee only valid for products bought direct from Abcam or one of our authorized distributors