


Product datasheet

Anti-RPA32/RPA2 antibody ab87315

3 Images

Overview

Product name	Anti-RPA32/RPA2 antibody
Description	Rabbit polyclonal to RPA32/RPA2
Host species	Rabbit
Tested applications	Suitable for: IHC-P
Species reactivity	Reacts with: Mouse, Human Predicted to work with: Rabbit, Horse, Pig, Chimpanzee, Rhesus monkey, Gorilla, Bat, Elephant 
Immunogen	Synthetic peptide corresponding to a region within the C terminal amino acids 225-270 of human RPA32/RPA2 (SwissProt entry P15927; GeneID 61118).
Positive control	Human controls; breast carcinoma, colon carcinoma, prostate carcinoma, small cell lung cancer, stomach adenocarcinoma, testicular seminoma. Mouse controls; colon carcinoma CT26, renal cell carcinoma, teratoma.

Properties

Form	Liquid
Storage instructions	Shipped at 4°C. Upon delivery aliquot and store at -20°C. Avoid freeze / thaw cycles.
Storage buffer	Preservative: 0.09% Sodium Azide Constituents: 0.1% BSA, Tris buffered saline
Purity	Immunogen affinity purified
Purification notes	ab87315 was affinity purified using an epitope specific to RPA32/RPA2 immobilized on solid support.
Clonality	Polyclonal
Isotype	IgG

Applications

Our [Abpromise guarantee](#) covers the use of **ab87315** in the following tested applications.

The application notes include recommended starting dilutions; optimal dilutions/concentrations should be determined by the end user.

Application	Abreviews	Notes
-------------	-----------	-------

IHC-P

Application notes

IHC-P: 1/100 - 1/500. Antigen retrieval (with Tris EDTA pH 9.0) is recommended and will enhance staining.

Likely to work on frozen sections.

Not yet tested in other applications.

Optimal dilutions/concentrations should be determined by the end user.

Target

Function

Required for DNA recombination, repair and replication. The activity of RP-A is mediated by single-stranded DNA binding and protein interactions.

Functions as component of the alternative replication protein A complex (aRPA). aRPA binds single-stranded DNA and probably plays a role in DNA repair; it does not support chromosomal DNA replication and cell cycle progression through S-phase. In vitro, aRPA cannot promote efficient priming by DNA polymerase alpha but supports DNA polymerase delta synthesis in the presence of PCNA and replication factor C (RFC), the dual incision/excision reaction of nucleotide excision repair and RAD51-dependent strand exchange.

Post-translational modifications

Phosphorylated in a cell-cycle-dependent manner (from the S phase until mitosis).

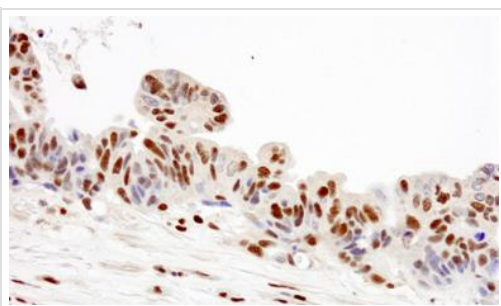
Phosphorylated by ATR upon DNA damage, which promotes its translocation to nuclear foci.

Can be phosphorylated in vitro by PRKDC/DNA-PK in the presence of Ku and DNA, and by CDK1.

Cellular localization

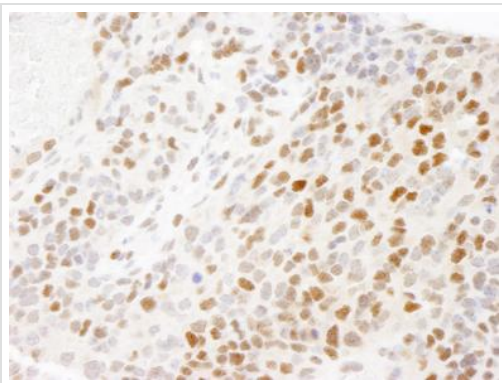
Nucleus. Nucleus > PML body. Also present in PML nuclear bodies. Redistributes to discrete nuclear foci upon DNA damage.

Images



ab87315, at a 1/250 dilution, staining RPA32/RPA2 in formalin fixed, paraffin embedded human ovarian tumor sections by Immunohistochemistry. Detection: DAB staining.

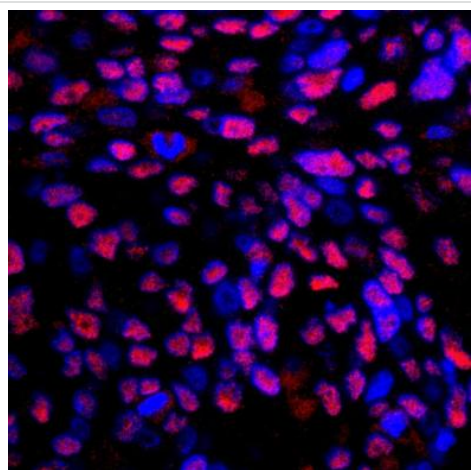
Immunohistochemistry (Formalin/PFA-fixed paraffin-embedded sections) - Anti-RPA32/RPA2 antibody (ab87315)



ab87315, at a 1/250 dilution, staining RPA32/RPA2 in formalin fixed, paraffin embedded mouse teratoma sections by Immunohistochemistry.

Detection: DAB staining.

Immunohistochemistry (Formalin/PFA-fixed paraffin-embedded sections) - Anti-RPA32/RPA2 antibody (ab87315)



ab87315, at a 1/100 dilution, staining RPA32/RPA2 in formalin fixed, paraffin embedded human breast tumor sections by Immunohistochemistry.

Detection: Red fluorescent goat anti rabbit IgG used at a dilution of 1/100.

Immunohistochemistry (Formalin/PFA-fixed paraffin-embedded sections) - Anti-RPA32/RPA2 antibody (ab87315)

Please note: All products are "FOR RESEARCH USE ONLY AND ARE NOT INTENDED FOR DIAGNOSTIC OR THERAPEUTIC USE"

Our Abpromise to you: Quality guaranteed and expert technical support

- Replacement or refund for products not performing as stated on the datasheet
- Valid for 12 months from date of delivery
- Response to your inquiry within 24 hours
- We provide support in Chinese, English, French, German, Japanese and Spanish
- Extensive multi-media technical resources to help you
- We investigate all quality concerns to ensure our products perform to the highest standards

If the product does not perform as described on this datasheet, we will offer a refund or replacement. For full details of the Abpromise, please visit <http://www.abcam.com/abpromise> or contact our technical team.

Terms and conditions

- Guarantee only valid for products bought direct from Abcam or one of our authorized distributors