

Product datasheet

Anti-RPL31 antibody ab103991

1 References 2 Images

Overview

<b>Product name</b>	Anti-RPL31 antibody
<b>Description</b>	Rabbit polyclonal to RPL31
<b>Host species</b>	Rabbit
<b>Tested applications</b>	<b>Suitable for:</b> WB, IHC-P
<b>Species reactivity</b>	<b>Reacts with:</b> Human
<b>Immunogen</b>	Synthetic peptide conjugated to KLH selected from the central region of Human RPL31 (NP_001092047).
<b>Positive control</b>	HeLa cell line lysates. Human testis tissue.

Properties

<b>Form</b>	Liquid
<b>Storage instructions</b>	Shipped at 4°C. Store at 4°C (up to 6 months). Store at -20°C long term.
<b>Storage buffer</b>	Preservative: 0.09% Sodium Azide Constituents: PBS
<b>Purity</b>	Immunogen affinity purified
<b>Purification notes</b>	ab103991 is purified through a protein A column, followed by peptide affinity purification.
<b>Clonality</b>	Polyclonal
<b>Isotype</b>	IgG

Applications

Our [Abpromise guarantee](#) covers the use of **ab103991** in the following tested applications.

The application notes include recommended starting dilutions; optimal dilutions/concentrations should be determined by the end user.

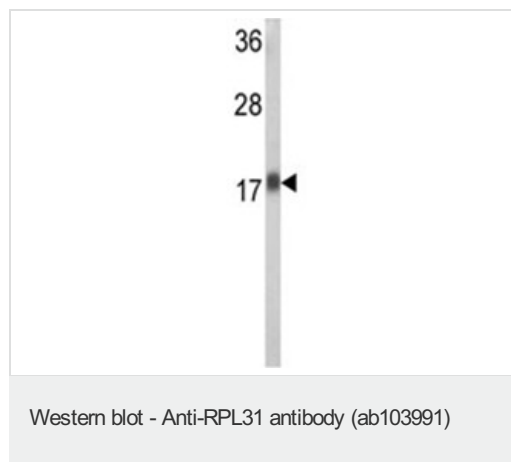
Application	Abreviews	Notes
WB		1/100 - 1/500. Predicted molecular weight: 14 kDa.
IHC-P		1/50 - 1/100. Perform heat mediated antigen retrieval with citrate buffer pH 6 before commencing with IHC staining protocol.

## Target

### Sequence similarities

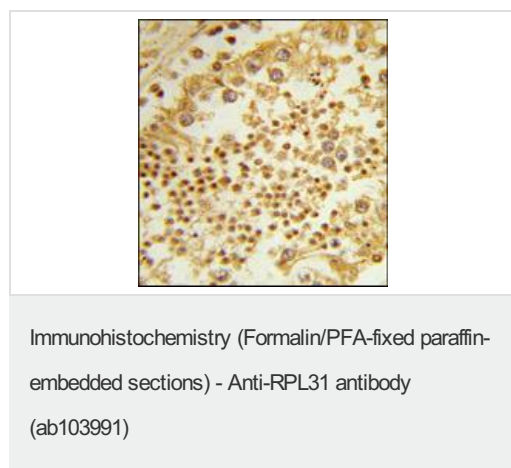
Belongs to the ribosomal protein L31e family.

## Images



Anti-RPL31 antibody (ab103991) at 1/100 dilution + HeLa cell line lysates at 35  $\mu$ g

**Predicted band size:** 14 kDa



ab103991 at 1/50 dilution staining RPL31 by immunohistochemistry in formalin fixed and paraffin embedded Human testis tissue followed by peroxidase conjugation of the secondary antibody and DAB staining

**Please note:** All products are "FOR RESEARCH USE ONLY AND ARE NOT INTENDED FOR DIAGNOSTIC OR THERAPEUTIC USE"

## Our Abpromise to you: Quality guaranteed and expert technical support

- Replacement or refund for products not performing as stated on the datasheet
- Valid for 12 months from date of delivery
- Response to your inquiry within 24 hours
- We provide support in Chinese, English, French, German, Japanese and Spanish
- Extensive multi-media technical resources to help you
- We investigate all quality concerns to ensure our products perform to the highest standards

If the product does not perform as described on this datasheet, we will offer a refund or replacement. For full details of the Abpromise, please visit <http://www.abcam.com/abpromise> or contact our technical team.

## Terms and conditions

---

- Guarantee only valid for products bought direct from Abcam or one of our authorized distributors