

Product datasheet

Anti-Rabphilin 3A antibody ab3338

★★★★☆ 1 Abreviews 1 Image

Overview

| | |
|----------------------------|--|
| Product name | Anti-Rabphilin 3A antibody |
| Description | Rabbit polyclonal to Rabphilin 3A |
| Host species | Rabbit |
| Tested applications | Suitable for: WB |
| Species reactivity | Reacts with: Rat Predicted to work with: Mouse |
| Immunogen | Synthetic peptide corresponding to Rat Rabphilin 3A aa 1-18. Sequence: MTDTVVNRWMYPGDGPLQ (Peptide available as ab4954) Run BLAST with Run BLAST with |
| Positive control | Rat brain whole protein extract. |

Properties

| | |
|-----------------------------|--|
| Form | Liquid |
| Storage instructions | Shipped at 4°C. Store at +4°C short term (1-2 weeks). Upon delivery aliquot. Store at -20°C or -80°C. Avoid freeze / thaw cycle. |
| Storage buffer | Constituents: 0.1% BSA, 99% PBS |
| Purity | Immunogen affinity purified |
| Clonality | Polyclonal |
| Isotype | IgG |

Applications

Our [Abpromise guarantee](#) covers the use of **ab3338** in the following tested applications.

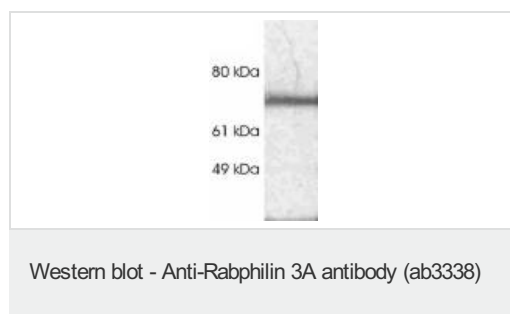
The application notes include recommended starting dilutions; optimal dilutions/concentrations should be determined by the end user.

| Application | Abreviews | Notes |
|-------------|-----------|--|
| WB | ★★★★☆ | Use a concentration of 1 µg/ml. Can be blocked with Rabphilin 3A peptide (ab4954) . By Western blot, this antibody detects an ~75 kDa protein representing Rabphilin 3A from rat brain whole protein extract. |

Target

| | |
|------------------------------|---|
| Function | Protein transport. Probably involved with Ras-related protein Rab-3A in synaptic vesicle traffic and/or synaptic vesicle fusion. Could play a role in neurotransmitter release by regulating membrane flow in the nerve terminal. |
| Sequence similarities | Contains 2 C2 domains. Contains 1 FYVE-type zinc finger. Contains 1 RabBD (Rab-binding) domain. |
| Cellular localization | Cell junction > synapse. |

Images



Western blot detection of Rabphilin 3A in rat brain extract using ab3338.

Please note: All products are "FOR RESEARCH USE ONLY AND ARE NOT INTENDED FOR DIAGNOSTIC OR THERAPEUTIC USE"

Our Abpromise to you: Quality guaranteed and expert technical support

- Replacement or refund for products not performing as stated on the datasheet
- Valid for 12 months from date of delivery
- Response to your inquiry within 24 hours
- We provide support in Chinese, English, French, German, Japanese and Spanish
- Extensive multi-media technical resources to help you
- We investigate all quality concerns to ensure our products perform to the highest standards

If the product does not perform as described on this datasheet, we will offer a refund or replacement. For full details of the Abpromise, please visit <http://www.abcam.com/abpromise> or contact our technical team.

Terms and conditions

- Guarantee only valid for products bought direct from Abcam or one of our authorized distributors