


Product datasheet

Anti-Rad6 antibody ab84395

1 References 2 Images

Overview

Product name	Anti-Rad6 antibody
Description	Rabbit polyclonal to Rad6
Host species	Rabbit
Tested applications	Suitable for: IHC-P, IHC-M
Species reactivity	Reacts with: Mouse, Human Predicted to work with: Rat, Rabbit, Horse, Chicken, Guinea pig, Cow, Pig, Xenopus laevis, Chimpanzee, Drosophila melanogaster, Zebrafish, Rhesus monkey, Gorilla, Orangutan, Xenopus tropicalis 
Immunogen	Synthetic peptide corresponding to Human Rad6 (N terminal). Synthetic peptide from the N-terminal of Human Rad6, Swiss-Prot P49459.
Positive control	Human stomach adenocarcinoma. Mouse squamous cell carcinoma.

Properties

Form	Liquid
Storage instructions	Shipped at 4°C. Upon delivery aliquot and store at -20°C. Avoid freeze / thaw cycles.
Storage buffer	Preservative: 0.09% Sodium Azide Constituents: 0.1% BSA, Tris buffered saline
Purity	Immunogen affinity purified
Clonality	Polyclonal
Isotype	IgG

Applications

Our [Abpromise guarantee](#) covers the use of **ab84395** in the following tested applications.

The application notes include recommended starting dilutions; optimal dilutions/concentrations should be determined by the end user.

Application	Abreviews	Notes
IHC-P		1/100 - 1/500. Antigen retrieval is not essential but may optimise staining. The use of citrate buffer will enhance staining. Likely to work in frozen sections.

Application	Abreviews	Notes
-------------	-----------	-------

IHC-M Use at an assay dependent concentration.

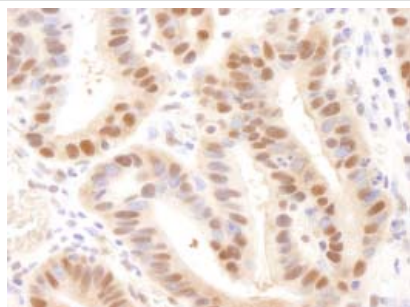
Target

Function Accepts ubiquitin from the E1 complex and catalyzes its covalent attachment to other proteins. In association with the E3 enzyme BRE1 (RNF20 and/or RNF40), it plays a role in transcription regulation by catalyzing the monoubiquitination of histone H2B at 'Lys-120' to form H2BK120ub1. H2BK120ub1 gives a specific tag for epigenetic transcriptional activation, elongation by RNA polymerase II, telomeric silencing, and is also a prerequisite for H3K4me and H3K79me formation. In vitro catalyzes 'Lys-11', as well as 'Lys-48'-linked polyubiquitination. Required for postreplication repair of UV-damaged DNA.

Pathway Protein modification; protein ubiquitination.

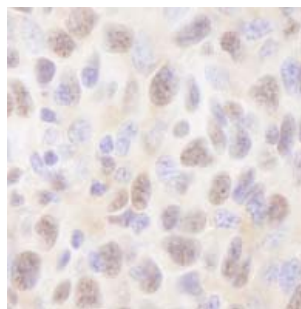
Sequence similarities Belongs to the ubiquitin-conjugating enzyme family.

Images



Detection of Human Rad6 by Immunohistochemistry.
 Sample: FFPE section of Human stomach adenocarcinoma.
 Antibody: ab84395 used at a dilution of 1/250.
 Detection: DAB staining using anti-Rabbit IHC antibody at a dilution of 1/100.

Immunohistochemistry (Formalin/PFA-fixed paraffin-embedded sections) - Anti-Rad6 antibody (ab84395)



Detection of Mouse Rad6 by Immunohistochemistry.
 Sample: FFPE section of Mouse squamous cell carcinoma.
 Antibody: ab84395 used at a dilution of 1/250.
 Detection: DAB staining using anti Rabbit IHC antibody at a dilution of 1/100.

Immunohistochemistry (Formalin/PFA-fixed paraffin-embedded sections) - Anti-Rad6 antibody (ab84395)

Please note: All products are "FOR RESEARCH USE ONLY AND ARE NOT INTENDED FOR DIAGNOSTIC OR THERAPEUTIC USE"

Our Abpromise to you: Quality guaranteed and expert technical support

- Replacement or refund for products not performing as stated on the datasheet
- Valid for 12 months from date of delivery
- Response to your inquiry within 24 hours

- We provide support in Chinese, English, French, German, Japanese and Spanish
- Extensive multi-media technical resources to help you
- We investigate all quality concerns to ensure our products perform to the highest standards

If the product does not perform as described on this datasheet, we will offer a refund or replacement. For full details of the Abpromise, please visit <http://www.abcam.com/abpromise> or contact our technical team.

Terms and conditions

- Guarantee only valid for products bought direct from Abcam or one of our authorized distributors