

Product datasheet

Rat BNP 45 ELISA Kit ab108816

★★★★☆ 1 Abreviews 2 References 2 Images

Overview

Product name Rat BNP 45 ELISA Kit

Detection method Colorimetric

Precision

Intra-assay

Sample	n	Mean	SD	CV%
Overall				4.9%

Inter-assay

Sample	n	Mean	SD	CV%
Overall				7.1%

Sample type Cell culture supernatant, Serum, Plasma, Tissue Extracts

Assay type Sandwich (quantitative)

Sensitivity = 0.03 ng/ml

Range 0.031 ng/ml - 1 ng/ml

Assay duration Multiple steps standard assay

Species reactivity **Reacts with:** Rat

Product overview

Abcam's BNP 45 rat *in vitro* ELISA (Enzyme-Linked Immunosorbent Assay) kit is designed for the quantitative measurement of BNP 45 in plasma, serum, tissue extract, and cell culture supernatants.

A BNP 45 specific antibody has been precoated onto 96-well plates and blocked. Standards or test samples are added to the wells and subsequently a BNP 45 specific biotinylated detection antibody is added and then followed by washing with wash buffer. Streptavidin-Peroxidase Conjugate is added and unbound conjugates are washed away with wash buffer. TMB is then used to visualize Streptavidin-Peroxidase enzymatic reaction. TMB is catalyzed by Streptavidin-Peroxidase to produce a blue color product that changes into yellow after adding acidic stop solution. The density of yellow coloration is directly proportional to the amount of BNP 45 captured in plate.

Notes There is significant cross-reactivity between BNP32 and BNP45.

Tested applications **Suitable for:** Sandwich ELISA

Platform Microplate

Properties

Storage instructions Store at -20°C. Please refer to protocols.

Components	1 x 96 tests
100X Streptavidin-Peroxidase Conjugate	1 x 80µl
10X Diluent N Concentrate	1 x 30ml
20X Wash Buffer Concentrate	2 x 30ml
50X Biotinylated Rat BNP 45 Antibody	1 x 120µl
BNP 45 Microplate (12 x 8 well strips)	1 unit
BNP 45 Standard	1 vial
Chromogen Substrate	1 x 8ml
Sealing Tapes	3 units
Stop Solution	1 x 12ml

Function Cardiac hormone which may function as a paracrine antifibrotic factor in the heart. Also plays a key role in cardiovascular homeostasis through natriuresis, diuresis, vasorelaxation, and inhibition of renin and aldosterone secretion. Specifically binds and stimulates the cGMP production of the NPR1 receptor. Binds the clearance receptor NPR3.

Tissue specificity Brain and also in atria, but at much lower levels than ANP.

Sequence similarities Belongs to the natriuretic peptide family.

Cellular localization Secreted.

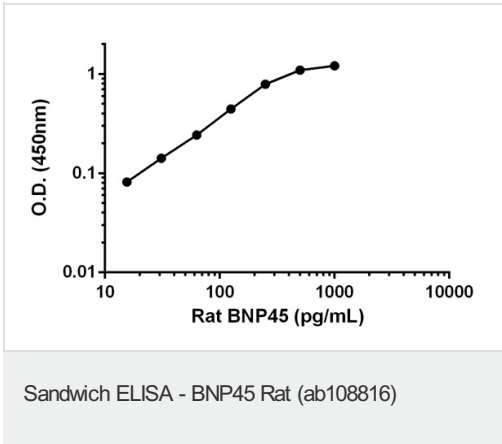
Applications

Our [Abpromise guarantee](#) covers the use of **ab108816** in the following tested applications.

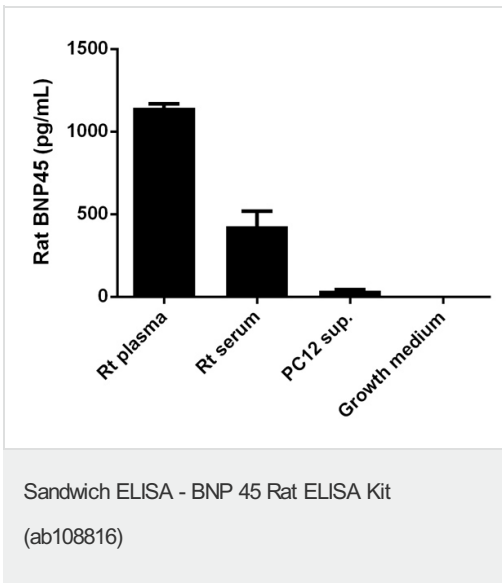
The application notes include recommended starting dilutions; optimal dilutions/concentrations should be determined by the end user.

Application	Abreviews	Notes
Sandwich ELISA		Use at an assay dependent dilution.

Images



Standard curve : mean of duplicates (+/-SD)
with background readings subtracted



Rat BNP45 measured in biological fluids
showing quantity (pg) per mL of tested sample

Please note: All products are "FOR RESEARCH USE ONLY AND ARE NOT INTENDED FOR DIAGNOSTIC OR THERAPEUTIC USE"

Our Abpromise to you: Quality guaranteed and expert technical support

- Replacement or refund for products not performing as stated on the datasheet
- Valid for 12 months from date of delivery
- Response to your inquiry within 24 hours
- We provide support in Chinese, English, French, German, Japanese and Spanish
- Extensive multi-media technical resources to help you
- We investigate all quality concerns to ensure our products perform to the highest standards

If the product does not perform as described on this datasheet, we will offer a refund or replacement. For full details of the Abpromise, please visit <http://www.abcam.com/abpromise> or contact our technical team.

Terms and conditions

- Guarantee only valid for products bought direct from Abcam or one of our authorized distributors