

## Product datasheet

# Anti-Rb2 p130 (phospho S952) antibody [EP2387AY] ab68136

Recombinant RabMAb

[2 References](#) [2 Images](#)

### Overview

<b>Product name</b>	Anti-Rb2 p130 (phospho S952) antibody [EP2387AY]
<b>Description</b>	Rabbit monoclonal [EP2387AY] to Rb2 p130 (phospho S952)
<b>Host species</b>	Rabbit
<b>Tested applications</b>	<b>Suitable for:</b> WB, IHC-P, ICC <b>Unsuitable for:</b> Flow Cyt or IP
<b>Species reactivity</b>	<b>Reacts with:</b> Mouse, Human
<b>Immunogen</b>	A synthetic phospho-peptide corresponding to residues surrounding serine 952 of human p130
<b>Positive control</b>	Jurkat cell lysate; human breast carcinoma tissue
<b>General notes</b>	This product is a recombinant rabbit monoclonal antibody.

Rat: We have preliminary internal testing data to indicate this antibody may not react with these species. Please contact us for more information.

Our RabMAb<sup>®</sup> technology is a patented hybridoma-based technology for making rabbit monoclonal antibodies. For details on our patents, please refer to [RabMAb<sup>®</sup> patents](#)

### Properties

<b>Form</b>	Liquid
<b>Storage instructions</b>	Shipped at 4°C. Store at -20°C. Stable for 12 months at -20°C.
<b>Storage buffer</b>	pH: 7.40 Preservative: 0.01% Sodium azide Constituents: 50% Glycerol, 0.05% BSA
<b>Purity</b>	Tissue culture supernatant
<b>Clonality</b>	Monoclonal
<b>Clone number</b>	EP2387AY
<b>Isotype</b>	IgG

## Applications

---

Our [Abpromise guarantee](#) covers the use of **ab68136** in the following tested applications.

The application notes include recommended starting dilutions; optimal dilutions/concentrations should be determined by the end user.

Application	Abreviews	Notes
WB		
IHC-P		
ICC		

### Application notes

ICC: 1/100 - 1/250.

IHC-P: 1/100 - 1/250.

WB: 1/10000 - 1/500000. Detects a band of approximately 128 kDa (predicted molecular weight: 128 kDa).

Is unsuitable for Flow Cyt or IP.

Not yet tested in other applications.

Optimal dilutions/concentrations should be determined by the end user.

## Target

---

### Relevance

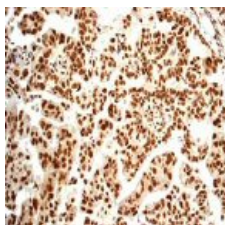
Two retinoblastoma related proteins, p107 and pRb2 / p130, which are structurally and functionally similar to the product of the retinoblastoma gene (pRb / p105), were cloned by taking advantage of their ability to bind transforming proteins of DNA tumor viruses through a particular region called the "pocket domain." Like pRb, both proteins play a fundamental role in growth control. These Rb family proteins were measured in a variety of lung neoplasms. The highest percentage of undetectable levels and the tightest inverse correlation with the histological grading and with PCNA expression in the most aggressive tumor types were found for pRb2 / p130, which may suggest an important role for this protein in the pathogenesis and progression of lung cancer.

### Cellular localization

Nuclear

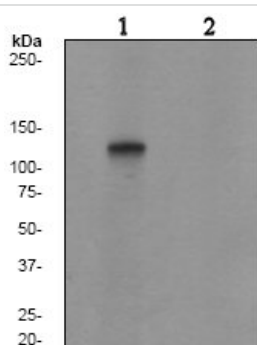
## Images

---



Immunohistochemical analysis of paraffin-embedded human breast carcinoma tissue using ab68136 at a dilution of 1/100.

Immunohistochemistry (Formalin/PFA-fixed paraffin-embedded sections) - Rb2 p130 (phospho S952) antibody [EP2387AY] (ab68136)



Western blot - Rb2 p130 (phospho S952) antibody [EP2387AY] (ab68136)

**All lanes :** Anti-Rb2 p130 (phospho S952) antibody [EP2387AY] (ab68136) at 1/500000 dilution

**Lane 1 :** Jurkat cell lysate, untreated

**Lane 2 :** Jurkat cell lysate, treated with AP

Lysates/proteins at 10 µg per lane.

#### Secondary

**All lanes :** HRP-labeled goat anti-mouse at 1/2000 dilution

**Predicted band size:** 128 kDa

**Observed band size:** 128 kDa

**Please note:** All products are "FOR RESEARCH USE ONLY AND ARE NOT INTENDED FOR DIAGNOSTIC OR THERAPEUTIC USE"

### Our Abpromise to you: Quality guaranteed and expert technical support

- Replacement or refund for products not performing as stated on the datasheet
- Valid for 12 months from date of delivery
- Response to your inquiry within 24 hours
- We provide support in Chinese, English, French, German, Japanese and Spanish
- Extensive multi-media technical resources to help you
- We investigate all quality concerns to ensure our products perform to the highest standards

If the product does not perform as described on this datasheet, we will offer a refund or replacement. For full details of the Abpromise, please visit <http://www.abcam.com/abpromise> or contact our technical team.

### Terms and conditions

- Guarantee only valid for products bought direct from Abcam or one of our authorized distributors