

Product datasheet

Recombinant Human 14-3-3 Tau protein ab85978

1 Image

Overview

| | |
|-----------------------|--------------------------------------|
| Product name | Recombinant Human 14-3-3 Tau protein |
| Protein length | Full length protein |

Description

| | |
|---------------|------------------|
| Nature | Recombinant |
| Source | Escherichia coli |

Amino Acid Sequence

| | |
|-------------------------|--|
| Accession | P27348 |
| Species | Human |
| Sequence | MEKTELIQKA KLAEQAERYD DMATCMKAVT EQGAELSNEE RNLLSVAYKN VVGRRSAWR VISSIEQKTD TSDKKLQLIK DYREKVESEL RSICTTVLEL LDKYLIANAT NPESKVFYK MKGDYFRYLA EVACGDDRKQ TIDNSQGAYQ EAFDISKKEM QPTHPIRLGL ALNFSVFYYE ILNNPELACT LAKTAFDEAI AELDTLNEDS YKDSTLIMQL LRDNLTLWTS DSAGEECDAA EGAEN |
| Molecular weight | 27 kDa |
| Amino acids | 1 to 245 |

Specifications

Our [Abpromise guarantee](#) covers the use of **ab85978** in the following tested applications.

The application notes include recommended starting dilutions; optimal dilutions/concentrations should be determined by the end user.

| | |
|---------------------|--|
| Applications | SDS-PAGE |
| Purity | > 95 % SDS-PAGE. ab85978 was purified using conventional chromatography techniques. |
| Form | Liquid |

Preparation and Storage

Stability and Storage

Shipped at 4°C. Store at +4°C short term (1-2 weeks). Upon delivery aliquot. Store at -20°C. Avoid freeze / thaw cycle.

pH: 7.4

Constituents: Phosphate Buffer, 10% Glycerol

General Info

Function

Adapter protein implicated in the regulation of a large spectrum of both general and specialized signaling pathways. Binds to a large number of partners, usually by recognition of a phosphoserine or phosphothreonine motif. Binding generally results in the modulation of the activity of the binding partner. Negatively regulates the kinase activity of PDPK1.

Tissue specificity

Abundantly expressed in brain, heart and pancreas, and at lower levels in kidney and placenta. Up-regulated in the lumbar spinal cord from patients with sporadic amyotrophic lateral sclerosis (ALS) compared with controls, with highest levels of expression in individuals with predominant lower motor neuron involvement.

Sequence similarities

Belongs to the 14-3-3 family.

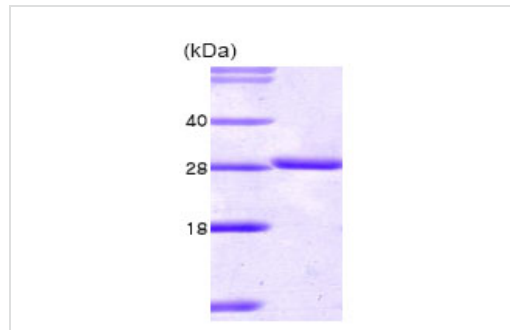
Post-translational modifications

Ser-232 is probably phosphorylated by CK1.

Cellular localization

Cytoplasm. In neurons, axonally transported to the nerve terminals.

Images



15% SDS-PAGE showing ab85978 at approximately 27kDa (3µg).

SDS-PAGE - 14-3-3 Tau protein (Human) (ab85978)

Please note: All products are "FOR RESEARCH USE ONLY AND ARE NOT INTENDED FOR DIAGNOSTIC OR THERAPEUTIC USE"

Our Abpromise to you: Quality guaranteed and expert technical support

- Replacement or refund for products not performing as stated on the datasheet
- Valid for 12 months from date of delivery
- Response to your inquiry within 24 hours
- We provide support in Chinese, English, French, German, Japanese and Spanish
- Extensive multi-media technical resources to help you
- We investigate all quality concerns to ensure our products perform to the highest standards

If the product does not perform as described on this datasheet, we will offer a refund or replacement. For full details of the Abpromise, please visit <http://www.abcam.com/abpromise> or contact our technical team.

Terms and conditions

- Guarantee only valid for products bought direct from Abcam or one of our authorized distributors