

## Product datasheet

# Recombinant Human ADH1C protein ab116935

1 Image

### Overview

<b>Product name</b>	Recombinant Human ADH1C protein
<b>Protein length</b>	Full length protein

### Description

<b>Nature</b>	Recombinant
<b>Source</b>	Wheat germ

### Amino Acid Sequence

<b>Accession</b>	<a href="#">P00326</a>
<b>Species</b>	Human
<b>Sequence</b>	MSTAGKVIKCKAAVLWELKKPFSIEEVEVAPPKAHEVRIKMVAAGICRSD EHVVSGNLVTPLPVILGHEAAGVESVGEVTTVKPGDKVIPLFTPQCGK CRICKNPESNYCLKNDLGNPRGTLQDGTRRFTCSGKPIHHFVGVSTFSQY TVVDENAVAKIDAASPLEKVCLIGCGFSTGYGSAVKVAKVTPGSTCAVFG LGGVGLSVVMGCKAAGAARIIVDINKDKFAKAKELGATECINPQDYKKP IQEVLKEMTDGGVDFSFVIGRLDTMMASLLCCHEACGTSVIVGVPPDSQ NLSINPMLLLTGRTWKGAIFGGFKSKESVPKLVADFMAKKFSLDALITNI LPFEKINEGFDLLRSGKSIRTVLTF
<b>Molecular weight</b>	67 kDa including tags
<b>Amino acids</b>	1 to 375

### Specifications

Our [Abpromise guarantee](#) covers the use of **ab116935** in the following tested applications.

The application notes include recommended starting dilutions; optimal dilutions/concentrations should be determined by the end user.

<b>Applications</b>	ELISA
	SDS-PAGE
	Western blot

<b>Form</b>	Liquid
-------------	--------

<b>Additional notes</b>	Protein concentration is above or equal to 0.05 mg/ml. Best use within three months from the date of receipt of this protein.
-------------------------	--

## Preparation and Storage

### Stability and Storage

Shipped on dry ice. Upon delivery aliquot and store at -80°C. Avoid freeze / thaw cycles.

pH: 8.00

Constituents: 0.3% Glutathione, 0.79% Tris HCl

## General Info

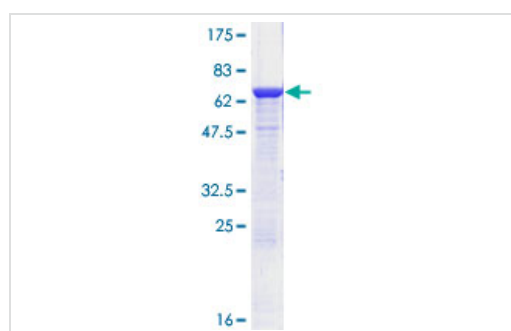
### Sequence similarities

Belongs to the zinc-containing alcohol dehydrogenase family.

### Cellular localization

Cytoplasm.

## Images



12.5% SDS-PAGE stained with Coomassie

Blue showing ab116935 at approximately

67.32 kDa.

SDS-PAGE - ADH1C protein (Human) (ab116935)

**Please note:** All products are "FOR RESEARCH USE ONLY AND ARE NOT INTENDED FOR DIAGNOSTIC OR THERAPEUTIC USE"

## Our Abpromise to you: Quality guaranteed and expert technical support

- Replacement or refund for products not performing as stated on the datasheet
- Valid for 12 months from date of delivery
- Response to your inquiry within 24 hours
- We provide support in Chinese, English, French, German, Japanese and Spanish
- Extensive multi-media technical resources to help you
- We investigate all quality concerns to ensure our products perform to the highest standards

If the product does not perform as described on this datasheet, we will offer a refund or replacement. For full details of the Abpromise, please visit <http://www.abcam.com/abpromise> or contact our technical team.

## Terms and conditions

- Guarantee only valid for products bought direct from Abcam or one of our authorized distributors