

Product datasheet

Recombinant Human AP1S1 protein ab116806

1 Image

Overview

Product name Recombinant Human AP1S1 protein
Protein length Full length protein

Description

Nature Recombinant
Source Wheat germ

Amino Acid Sequence

Accession [P61966-2](#)
Species Human
Sequence MMRFMLLFSRQGKLRRLRWYLATSDKERKKMVRELMQVVLARKPKMCSFL
 EWRDLKVVYKRYASLYFCCAIEGQDNELITLELIHRYVELLDKYFGSVCE
 LDIIIFNEKAYFILDEFMGGDVQDTSTFPFSH
Molecular weight 41 kDa including tags
Amino acids 1 to 133

Specifications

Our [Abpromise guarantee](#) covers the use of **ab116806** in the following tested applications.

The application notes include recommended starting dilutions; optimal dilutions/concentrations should be determined by the end user.

Applications Western blot
 ELISA
 SDS-PAGE

Form Liquid

Additional notes Protein concentration is above or equal to 0.05 mg/ml.
 This protein is best used within three months from the date of receipt.

Preparation and Storage

Stability and Storage Shipped on dry ice. Upon delivery aliquot and store at -80°C. Avoid freeze / thaw cycles.

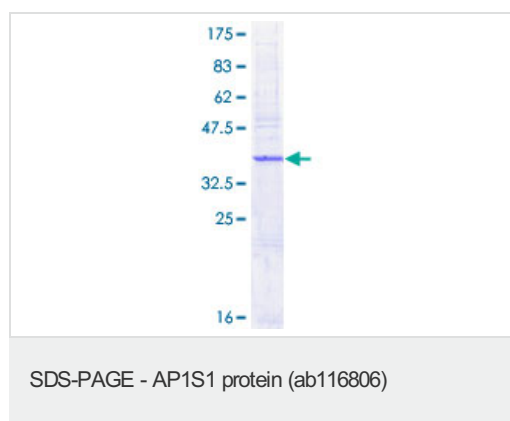
pH: 8.00

Constituents: 0.79% Tris HCl, 0.3% Glutathione

General Info

Function	Subunit of clathrin-associated adaptor protein complex 1 that plays a role in protein sorting in the late-Golgi/trans-Golgi network (TGN) and/or endosomes. The AP complexes mediate both the recruitment of clathrin to membranes and the recognition of sorting signals within the cytosolic tails of transmembrane cargo molecules.
Tissue specificity	Widely expressed.
Sequence similarities	Belongs to the adaptor complexes small subunit family.
Cellular localization	Golgi apparatus. Cytoplasmic vesicle membrane. Membrane > clathrin-coated pit. Component of the coat surrounding the cytoplasmic face of coated vesicles located at the Golgi complex.

Images



12.5% SDS-PAGE showing ab116806 at approximately 40.74kDa.
Stained with Coomassie Blue.

Please note: All products are "FOR RESEARCH USE ONLY AND ARE NOT INTENDED FOR DIAGNOSTIC OR THERAPEUTIC USE"

Our Abpromise to you: Quality guaranteed and expert technical support

- Replacement or refund for products not performing as stated on the datasheet
- Valid for 12 months from date of delivery
- Response to your inquiry within 24 hours
- We provide support in Chinese, English, French, German, Japanese and Spanish
- Extensive multi-media technical resources to help you
- We investigate all quality concerns to ensure our products perform to the highest standards

If the product does not perform as described on this datasheet, we will offer a refund or replacement. For full details of the Abpromise, please visit <http://www.abcam.com/abpromise> or contact our technical team.

Terms and conditions

- Guarantee only valid for products bought direct from Abcam or one of our authorized distributors