

Product datasheet

Recombinant Human ARL1 protein ab99261

1 Image

Overview

---

<b>Product name</b>	Recombinant Human ARL1 protein
<b>Protein length</b>	Full length protein

Description

---

<b>Nature</b>	Recombinant
<b>Source</b>	Escherichia coli

Amino Acid Sequence

<b>Accession</b>	<a href="#">P40616</a>
<b>Species</b>	Human
<b>Sequence</b>	<b>MGSSHHHHHSSGLVPRGSH</b> MGGFFSSIFSSLFGTREMRLILGLDGAGK TTILYRLQVGEVVTTIPTIGFNVETVYKNLKFQVWDLGGQTSIRPYWRC YYSNTDAVIYVVDSCDRDRIGISKSELVAMLEEEELRKAILVVFANKQDM EQAMTSSEMANSGLPALKDRKWQIFKTSATKGTGLDEAMEWLVETLKSR Q
<b>Molecular weight</b>	23 kDa including tags
<b>Amino acids</b>	1 to 181
<b>Tags</b>	His tag N-Terminus

Specifications

---

Our [Abpromise guarantee](#) covers the use of **ab99261** in the following tested applications.

The application notes include recommended starting dilutions; optimal dilutions/concentrations should be determined by the end user.

<b>Applications</b>	SDS-PAGE Mass Spectrometry
<b>Mass spectrometry</b>	MALDI-TOF
<b>Purity</b>	> 95 % SDS-PAGE. ab99261 is purified using conventional chromatography techniques.
<b>Form</b>	Liquid

Preparation and Storage

---

## Stability and Storage

Shipped at 4°C. Upon delivery aliquot and store at -20°C or -80°C. Avoid repeated freeze / thaw cycles.

Preservative: None

Constituents: 40% Glycerol, 20mM Tris HCl, 2mM DTT, 100mM Sodium chloride, pH 8.0

---

## General Info

### Function

GTP-binding protein that has very low efficiency as allosteric activator of the cholera toxin catalytic subunit, an ADP-ribosyltransferase. Can activate phospholipase D with very low efficiency. Important for normal function of the Golgi apparatus.

### Tissue specificity

Detected in heart, liver, lung and liver (at protein level). Detected in fetal heart, lung, liver and kidney. Detected in adult heart, placenta, lung, liver, skeletal muscle, kidney and pancreas.

### Sequence similarities

Belongs to the small GTPase superfamily. Arf family.

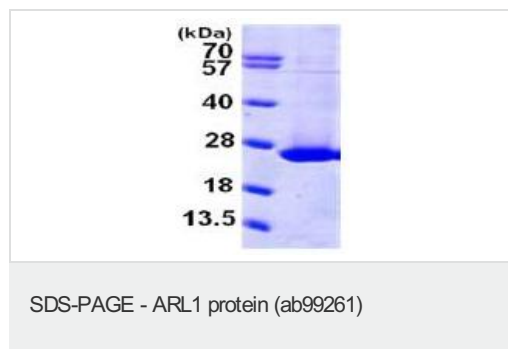
### Cellular localization

Golgi apparatus membrane.

---

---

## Images



15% SDS-PAGE showing ab99261 at approximately 22.5kDa (3µg).

**Please note:** All products are "FOR RESEARCH USE ONLY AND ARE NOT INTENDED FOR DIAGNOSTIC OR THERAPEUTIC USE"

---

## Our Abpromise to you: Quality guaranteed and expert technical support

- Replacement or refund for products not performing as stated on the datasheet
- Valid for 12 months from date of delivery
- Response to your inquiry within 24 hours
  
- We provide support in Chinese, English, French, German, Japanese and Spanish
- Extensive multi-media technical resources to help you
- We investigate all quality concerns to ensure our products perform to the highest standards

If the product does not perform as described on this datasheet, we will offer a refund or replacement. For full details of the Abpromise, please visit <http://www.abcam.com/abpromise> or contact our technical team.

---

## Terms and conditions

- Guarantee only valid for products bought direct from Abcam or one of our authorized distributors