

Product datasheet

Recombinant Human Aggrecan protein ab114254

1 Image

Overview

Product name	Recombinant Human Aggrecan protein
Protein length	Full length protein

Description

Nature	Recombinant
Source	Wheat germ

Amino Acid Sequence

Species	Human
Sequence	<p>MTLLWVFTLRVITAAVTVETSDHDNSLSVSIQPSPLRVLLGTSLTIP CYFIDPMHPVTTAPSTAPLAPRIKWSRVSKEKEVLLVATEGRVVRNSAY QDKVSLPNYPAIPSDATLEVQSLRSNDSGVYRCEVMHGIEDSEATLEVVV KGIVFHYRAISTRYTLDFDRAQRAQLQNSAIIATPEQLQAAYEDGFHQCD AGWLADQTVRYPIHTPREGCYGDKDEFPGVRTYGIRDNETYDVYCFEAE MEGEV FYATSPEKFTFQEAANECRRLGARLATTGQLYLAWQAGMDMCSAG WLADRSVRYPISKARPNCGGNLLGVRTVYVHANQTGYDPDSSRYDAICYT GEDFVDIPENFFGVGGEEDITVQVTWPDMEPLPRNITEGEARGSVILT VKPIFEVSPSPLEPEEPFTFAPEIGATAFAEVENETGEATRPWGFPTPGL GPATAFTSEDLVVQVTAVPGQPHLPGGVVFHYRPGPTRYSLTFEEAQQAC LRTGAVIASPEQLQAAYEAGYEQCDAGWLRDQTVRYPIVSPRTPCVGDKD SSPGVRTYGVRPSTETYDVYCFVDRLEGEVFFATRLEQFTFQEALEFCES HNATLATTGQLYAAWSRGLDKCYAGWLADGSLRYPIVTPRPACGGDKPGV RTVYLYPNQTGLPDPLSRHHAFCFRGMQPHFGSNSPFCLERTPLGSPDPA TTQYPIHQSKKMSVPLGQSQL</p>

Molecular weight	105 kDa including tags
Amino acids	1 to 721

Specifications

Our [Abpromise guarantee](#) covers the use of **ab114254** in the following tested applications.

The application notes include recommended starting dilutions; optimal dilutions/concentrations should be determined by the end user.

Applications	ELISA SDS-PAGE
---------------------	-------------------

	Western blot
Form	Liquid
Additional notes	Protein concentration is above or equal to 0.05 µg/µl

Preparation and Storage

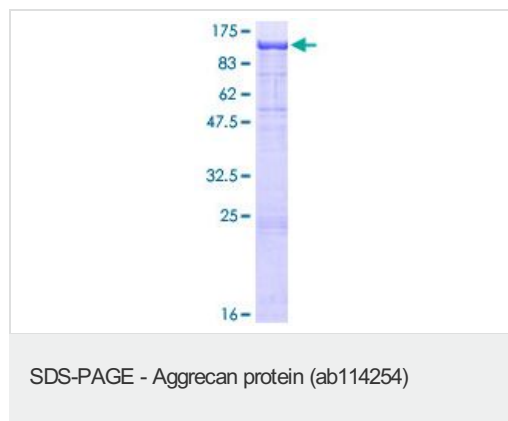
Stability and Storage	Shipped on dry ice. Upon delivery aliquot and store at -80°C. Avoid freeze / thaw cycles. pH: 8.00 Constituents: 0.3% Glutathione, 0.79% Tris HCl
------------------------------	---

General Info

Relevance	Aggrecan is a member of a family of large, aggregating proteoglycans (also including versican, brevican and neurocan) which is found in articular cartilage. Aggrecan is composed of three major domains: G1, G2, and G3. Between the G1 and G2 domains there is an interglobulin region (IGD). The IGD region is the major site of cleavage by specific proteases like metalloproteinases (MMPs) and aggrecanase. Aggrecan cleavage has been associated with a number of degenerative diseases including rheumatoid arthritis and osteoarthritis. There is evidence that this family of proteoglycans modulates cell adhesion, migration, and axonal outgrowth in the CNS.
------------------	---

Cellular localization	Secreted; extracellular matrix.
------------------------------	---------------------------------

Images



ab114254 analysed by 12.5% SDS-PAGE and stained with Coomassie Blue.

Please note: All products are "FOR RESEARCH USE ONLY AND ARE NOT INTENDED FOR DIAGNOSTIC OR THERAPEUTIC USE"

Our Abpromise to you: Quality guaranteed and expert technical support

- Replacement or refund for products not performing as stated on the datasheet
- Valid for 12 months from date of delivery
- Response to your inquiry within 24 hours
- We provide support in Chinese, English, French, German, Japanese and Spanish

- Extensive multi-media technical resources to help you
- We investigate all quality concerns to ensure our products perform to the highest standards

If the product does not perform as described on this datasheet, we will offer a refund or replacement. For full details of the Abpromise, please visit <http://www.abcam.com/abpromise> or contact our technical team.

Terms and conditions

- Guarantee only valid for products bought direct from Abcam or one of our authorized distributors