

## Product datasheet

# Recombinant Human BBS12 protein ab165782

1 Image

### Overview

<b>Product name</b>	Recombinant Human BBS12 protein
<b>Protein length</b>	Full length protein

### Description

<b>Nature</b>	Recombinant
<b>Source</b>	Wheat germ

### Amino Acid Sequence

<b>Species</b>	Human
<b>Sequence</b>	MVMACRVVNKRRHMGLQQLSSFAETGRTFLGPLKSSKFIIIEECHESVLI SSTVRLLESLDLTSAVGQLLNEAVQAQNNYRTGISTLLFLVGAWSSAVE ECLHLGVPISIVSVMSEGLNFCSEEVSLHVPVHNIFDCMDSTKTFSQL ETFSVSLCPFLQVPSDLDLIEELHGLKDVASQTLTISNLGRPLKSYELF KPQTKVEADNNTSRTLKNSLLADTCCRQSIHRSRHFNRDNTTEGVSKPD GFQEHVTATHKTYRCNDLVELAVGLSHGDHSSMKLVEEAVQLQYQACVQ QGNTKPFMFDISRIFTCCLPGLPETSSCVCPGYITVVSVSNNPVKELQ NQPVRVILIEGDLTENYRHLGFNKSANIKTVLDSMRLQEDSSEELWANHV LQVLIQFKVNLVLVQGNVSERLIEKCINSKRLVIGSVNGSVMQAFAEAAG AVQVAYITQVNEDCVGDGVCVTFWRSSPLDVDRNNRIALLKTEGINLV TAVLTNPVTAQMCIKEDRFWTCAYRLYYALKEEKVFLGGGAVEFLCLCSCL HILAEQSLKKNHACSGWLHNTSSWLASSLAYRPTVLKFLANGWQKYL TLLYNTANYSSEFEASTYQHHLQNAATDSGSPSSYLNEYSKLNSRIFNS DISNKLEQIPRVYDVVTPKIEAWRRALDLVLLVLQTDSEITGHGHTQIN SQELTGFLFL
<b>Amino acids</b>	1 to 710
<b>Tags</b>	proprietary tag N-Terminus

### Specifications

Our [Abpromise guarantee](#) covers the use of **ab165782** in the following tested applications.

The application notes include recommended starting dilutions; optimal dilutions/concentrations should be determined by the end user.

<b>Applications</b>	ELISA Western blot
---------------------	-----------------------

<b>Form</b>	Liquid
<b>Additional notes</b>	Protein concentration is above or equal to 0.05 mg/ml.

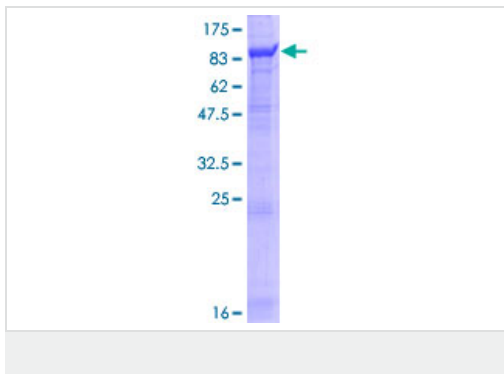
## Preparation and Storage

<b>Stability and Storage</b>	Shipped on dry ice. Upon delivery aliquot and store at -80°C. Avoid freeze / thaw cycles. pH: 8.00 Constituents: 0.31% Glutathione, 0.79% Tris HCl
------------------------------	--

## General Info

<b>Function</b>	Probable molecular chaperone. Assists the folding of proteins upon ATP hydrolysis. As part of the BBS/CCT complex may play a role in the assembly of BBSome, a complex involved in ciliogenesis regulating transports vesicles to the cilia. Involved in adipogenic differentiation.
<b>Involvement in disease</b>	Bardet-Biedl syndrome 12
<b>Sequence similarities</b>	Belongs to the TCP-1 chaperonin family. BBS12 subfamily.
<b>Cellular localization</b>	Cell projection, cilium. Located within the basal body of the primary cilium of differentiating preadipocytes.

## Images



ab165782 on a 12.5% SDS-PAGE stained with Coomassie Blue.

**Please note:** All products are "FOR RESEARCH USE ONLY AND ARE NOT INTENDED FOR DIAGNOSTIC OR THERAPEUTIC USE"

## Our Abpromise to you: Quality guaranteed and expert technical support

- Replacement or refund for products not performing as stated on the datasheet
- Valid for 12 months from date of delivery
- Response to your inquiry within 24 hours
- We provide support in Chinese, English, French, German, Japanese and Spanish
- Extensive multi-media technical resources to help you
- We investigate all quality concerns to ensure our products perform to the highest standards

If the product does not perform as described on this datasheet, we will offer a refund or replacement. For full details of the Abpromise,

please visit <http://www.abcam.com/abpromise> or contact our technical team.

## **Terms and conditions**

---

- Guarantee only valid for products bought direct from Abcam or one of our authorized distributors