

## Product datasheet

# Recombinant Human BS69 protein **ab161146**

1 Image

### Overview

---

<b>Product name</b>	Recombinant Human BS69 protein
<b>Protein length</b>	Full length protein

### Description

---

<b>Nature</b>	Recombinant
<b>Source</b>	Wheat germ

### Amino Acid Sequence

<b>Species</b>	Human
<b>Sequence</b>	MSRVHGMHPKETTRQLSLAVKDGLMETLTVGCKGSKAGIEQEGYWLPGD EISIKKNTNKQEMGYLRFVSRMKERAIDLNKKGKDNKHPMYRRLVHS AVDVPTIQEKVNEGKYRSYEEFKADAQLLLHNTVIFYGADSEQADIARML YKDTCHELDELQLCKNCFYLSNARPDNWFCYPCIPNHELWAKMKGFVFW PAKVMQKEDNQVDVRRFFGHHHQRRAWIPSENIQDITVNIHRLHVKRSMGWK KACDELELHQRFLREGRFWKSKNEDRGEAAAESSISSTSNEQLKVTQEPR AKKGRRNQSVEPKKEEPEPEAVSSSQEIPMPQPIEKVSVSTQTKKLS ASSPRMLHRSTQTTNDGVCQSMCHDKYTKIFNDFKDRMKSDHKRETERVV REALEKLRSEMEEEKRQAVNKAVANMQGEMDRKCKQVKEKCKEEFVEEIK KLATQHKQLISQTKKKQWCYNCEEEAMYHCCWNTSYCSIKCQQEHWAHEH KRTCRRKR
<b>Amino acids</b>	1 to 508
<b>Tags</b>	proprietary tag N-Terminus

### Specifications

---

Our [Abpromise guarantee](#) covers the use of **ab161146** in the following tested applications.

The application notes include recommended starting dilutions; optimal dilutions/concentrations should be determined by the end user.

<b>Applications</b>	ELISA Western blot
<b>Form</b>	Liquid
<b>Additional notes</b>	Protein concentration is above or equal to 0.05 mg/ml.

## Preparation and Storage

---

### Stability and Storage

Shipped on dry ice. Upon delivery aliquot and store at -80°C. Avoid freeze / thaw cycles.

pH: 8.00

Constituents: 0.31% Glutathione, 0.79% Tris HCl

## General Info

---

### Relevance

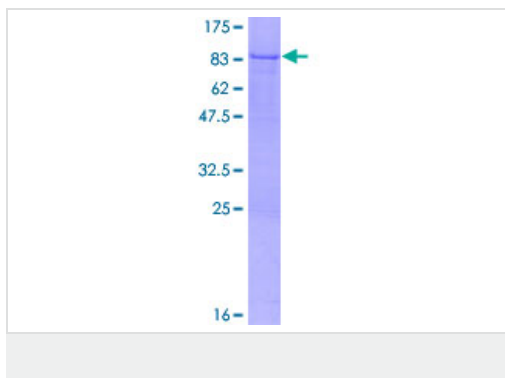
BS69 is a factor previously identified as an adenovirus E1A-associated protein. The protein localizes to the nucleus. It functions as a transcriptional repressor, and expression of E1A inhibits this repression. Two transcript variants encoding different isoforms have been found for this gene.

### Cellular localization

Nuclear

## Images

---



ab161146 on a 12.5% SDS-PAGE stained with Coomassie Blue.

**Please note:** All products are "FOR RESEARCH USE ONLY AND ARE NOT INTENDED FOR DIAGNOSTIC OR THERAPEUTIC USE"

## Our Abpromise to you: Quality guaranteed and expert technical support

---

- Replacement or refund for products not performing as stated on the datasheet
- Valid for 12 months from date of delivery
- Response to your inquiry within 24 hours
- We provide support in Chinese, English, French, German, Japanese and Spanish
- Extensive multi-media technical resources to help you
- We investigate all quality concerns to ensure our products perform to the highest standards

If the product does not perform as described on this datasheet, we will offer a refund or replacement. For full details of the Abpromise, please visit <http://www.abcam.com/abpromise> or contact our technical team.

## Terms and conditions

---

- Guarantee only valid for products bought direct from Abcam or one of our authorized distributors