

Product datasheet

Recombinant Human CBFb protein ab98252

1 Image

Overview

Product name	Recombinant Human CBFb protein
Protein length	Full length protein

Description

Nature	Recombinant
Source	Escherichia coli

Amino Acid Sequence

Accession	Q13951
Species	Human
Sequence	MGSSHHHHHSSGLVPRGSH MPRVVPDQRSKFENEFFRKLSRECEIKYT GFRDRPHEERQARFQNAACRDGRSEIAFVATGTNLSLQFFPASWQGEQRQT PSREYVDLEREAGKVYLKAPMILNGVCVWKGWIDLQRLDGMGCLEFDEE RAQQEDALAQQAFEEARRRTREFEDRDRSHREEMEVRSQLLAVTGKKT RP
Molecular weight	24 kDa including tags
Amino acids	1 to 182
Tags	His tag N-Terminus

Specifications

Our [Abpromise guarantee](#) covers the use of **ab98252** in the following tested applications.

The application notes include recommended starting dilutions; optimal dilutions/concentrations should be determined by the end user.

Applications	SDS-PAGE Mass Spectrometry
Mass spectrometry	MALDI-TOF
Purity	>= 85 % SDS-PAGE. ab98252 was purified using conventional chromatography.
Form	Liquid

Preparation and Storage

Stability and Storage

Shipped at 4°C. Upon delivery aliquot and store at -20°C or -80°C. Avoid repeated freeze / thaw cycles.

Preservative: None

Constituents: 10% Glycerol, 20mM MES, 0.1mM PMSF, pH 6.0

General Info

Function

CBF binds to the core site, 5'-PYGPYGGT-3', of a number of enhancers and promoters, including murine leukemia virus, polyomavirus enhancer, T-cell receptor enhancers, LCK, IL3 and GM-CSF promoters. CBFβ enhances DNA binding by RUNX1.

Involvement in disease

Note=A chromosomal aberration involving CBFβ is associated with acute myeloid leukemia of M4EO subtype. Pericentric inversion inv(16)(p13;q22). The inversion produces a fusion protein that consists of the 165 N-terminal residues of CBF-beta (PEPB2) with the tail region of MYH11.

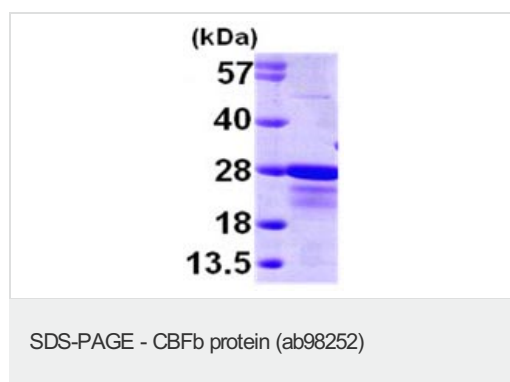
Sequence similarities

Belongs to the CBF-beta family.

Cellular localization

Nucleus.

Images



15% SDS-PAGE analysis of 3μg ab98252

Please note: All products are "FOR RESEARCH USE ONLY AND ARE NOT INTENDED FOR DIAGNOSTIC OR THERAPEUTIC USE"

Our Abpromise to you: Quality guaranteed and expert technical support

- Replacement or refund for products not performing as stated on the datasheet
- Valid for 12 months from date of delivery
- Response to your inquiry within 24 hours
- We provide support in Chinese, English, French, German, Japanese and Spanish
- Extensive multi-media technical resources to help you
- We investigate all quality concerns to ensure our products perform to the highest standards

If the product does not perform as described on this datasheet, we will offer a refund or replacement. For full details of the Abpromise, please visit <http://www.abcam.com/abpromise> or contact our technical team.

Terms and conditions

- Guarantee only valid for products bought direct from Abcam or one of our authorized distributors