

## Product datasheet

# Recombinant Human CD18 protein ab114283

★★★★★ 1 Abreviews 1 Image

### Overview

---

<b>Product name</b>	Recombinant Human CD18 protein
<b>Protein length</b>	Full length protein

### Description

---

<b>Nature</b>	Recombinant
<b>Source</b>	Wheat germ

### Amino Acid Sequence

**Accession** [P05107](#)

**Species** Human

**Sequence** MLGLRPPLLALVGLLSLGCVLSQECTKFKVSSCRECIESGPGCTWCQKLN  
 FTGPGDPDSIRCDTRPQLLMRGCAADDIMDPTSLAETQEDHNGGQKQLSP  
 QKVTLYLRPGQAAAFNVTFRRAKGYPIDLYLMDLSYSMLDDLNRNVKKG  
 GDLLRALNEITESGRIGFGSFVDKTVLPFVNTHPDKLRNPCPNKEKECQP  
 PFAFRHVLKLTNNSNQFQTEVGKQLISGNLDAPEGGLDAMMQVAACPPEI  
 GWRNVTRLLVFATDDGFHFAGDGKLGAILTPNDGRCHLEDNLYKRSNEFD  
 YPSVGQLAHKLAENNIQPIFAVTSRMVKTYEKLTEIIPKSAVGELSEDSS  
 NVVHLIKNAYNKLSSRVFLDHNALPDTLKVTYDSFCSNGVTHRNPGRGDC  
 DGVINVPITFQVKVTATECIEQSFVIRALGFTDMTVQVLPQCECRCR  
 DQSRDRSLCHGKGFLECGICRCDTG YIGKNCECQTQGRSSQELEGSCRKD  
 NNSIICSLGDCVCGQCLCHTSDVPGKLIYQYCECDTINCERYNGQVCG  
 GPGRGLCFGKCRCHPGFEGSACQCERTTEGCLNPRRVECSGRGRRCRCNV  
 CECHSGYQLPLCQECPGCPSPCGKYISCAECLKFEKGPFKNCNSAACPL  
 QLSNNPVKGRGRTCKERDSEGCWVAYTLEQQDGM DRYLIYVDESRECVAGPN  
 IAAVGGTVAGVLIGILLVWKALIHLSDLREYRFEKEKLSQWNNND  
 NPLFKSATTTVMNPKFAES

<b>Molecular weight</b>	111 kDa including tags
<b>Amino acids</b>	1 to 769

### Specifications

---

Our [Abpromise guarantee](#) covers the use of **ab114283** in the following tested applications.

The application notes include recommended starting dilutions; optimal dilutions/concentrations should be determined by the end user.

**Applications**

ELISA  
SDS-PAGE  
Western blot

**Form**

Liquid

**Additional notes**

Protein concentration is above or equal to 0.05 mg/ml.  
This protein is best used within three months from the date of receipt.

**Preparation and Storage****Stability and Storage**

Shipped on dry ice. Upon delivery aliquot and store at -80°C. Avoid freeze / thaw cycles.  
pH: 8.00  
Constituents: 0.79% Tris HCl, 0.3% Glutathione

**General Info****Function**

Integrin alpha-L/beta-2 is a receptor for ICAM1, ICAM2, ICAM3 and ICAM4. Integrins alpha-M/beta-2 and alpha-X/beta-2 are receptors for the iC3b fragment of the third complement component and for fibrinogen. Integrin alpha-X/beta-2 recognizes the sequence G-P-R in fibrinogen alpha-chain. Integrin alpha-M/beta-2 recognizes P1 and P2 peptides of fibrinogen gamma chain. Integrin alpha-M/beta-2 is also a receptor for factor X. Integrin alpha-D/beta-2 is a receptor for ICAM3 and VCAM1.

**Involvement in disease**

Defects in ITGB2 are the cause of leukocyte adhesion deficiency type 1 (LAD1) [MIM:116920]. LAD1 patients have recurrent bacterial infections and their leukocytes are deficient in a wide range of adhesion-dependent functions.

**Sequence similarities**

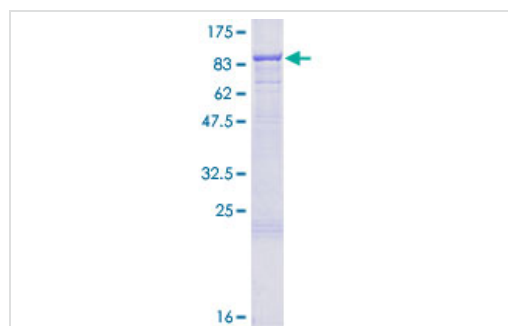
Belongs to the integrin beta chain family.  
Contains 1 VWFA domain.

**Post-translational modifications**

Both Ser-745 and Ser-756 become phosphorylated when T-cells are exposed to phorbol esters. Phosphorylation on Thr-758 (but not on Ser-756) allows interaction with 14-3-3 proteins.

**Cellular localization**

Membrane.

**Images**

12.5% SDS-PAGE analysis of CD18 protein (ab114283). Stained with Coomassie Blue.

SDS-PAGE - CD18 protein (ab114283)

## **Our Abpromise to you: Quality guaranteed and expert technical support**

---

- Replacement or refund for products not performing as stated on the datasheet
- Valid for 12 months from date of delivery
- Response to your inquiry within 24 hours
  
- We provide support in Chinese, English, French, German, Japanese and Spanish
- Extensive multi-media technical resources to help you
- We investigate all quality concerns to ensure our products perform to the highest standards

If the product does not perform as described on this datasheet, we will offer a refund or replacement. For full details of the Abpromise, please visit <http://www.abcam.com/abpromise> or contact our technical team.

## **Terms and conditions**

---

- Guarantee only valid for products bought direct from Abcam or one of our authorized distributors