

## Product datasheet

# Recombinant Human CD3 epsilon protein ab114153

1 Image

### Overview

---

|                       |                                       |
|-----------------------|---------------------------------------|
| <b>Product name</b>   | Recombinant Human CD3 epsilon protein |
| <b>Protein length</b> | Full length protein                   |

### Description

---

|               |             |
|---------------|-------------|
| <b>Nature</b> | Recombinant |
| <b>Source</b> | Wheat germ  |

### Amino Acid Sequence

|                         |  |
|-------------------------|--|
| <b>Accession</b>        | <a href="#">P07766</a>   |
| <b>Species</b>          | Human  |
| <b>Sequence</b>         | DGNEEMGGITQTPYKVSISGTTVILTCPQYPGSEILWQRNDKNIGGEDD<br>KNIGSDEDHLSLKEFSELEQSGYYVCYPRGSKPEDANFYLYLRARVCENC<br>MEMDVMSVATIVIDICITGGLLLLVIYWSKNRKAAPVTRGAGAGGRQ<br>RGQNKERPPVPPNPDIYPIRKGQRDLISGLNQRR |
| <b>Molecular weight</b> | 46 kDa including tags  |
| <b>Amino acids</b>      | 23 to 207  |
| <b>Tags</b>             | GST tag N-Terminus   |

### Specifications

---

Our [Abpromise guarantee](#) covers the use of **ab114153** in the following tested applications.

The application notes include recommended starting dilutions; optimal dilutions/concentrations should be determined by the end user.

|                         |   |
|-------------------------|---|
| <b>Applications</b>     | ELISA<br>Western blot<br>SDS-PAGE                                   |
| <b>Form</b>             | Liquid  |
| <b>Additional notes</b> | ab114153 is best used within three months from the date of receipt. |

### Preparation and Storage

---

## Stability and Storage

Shipped on dry ice. Upon delivery aliquot and store at -80°C. Avoid freeze / thaw cycles.

pH: 8.00

Constituents: 0.3% Glutathione, 0.79% Tris HCl

## General Info

### Function

The CD3 complex mediates signal transduction.

### Sequence similarities

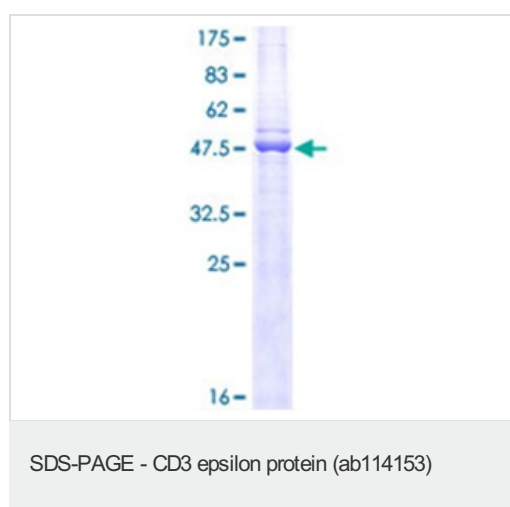
Contains 1 Ig-like (immunoglobulin-like) domain.

Contains 1 ITAM domain.

### Cellular localization

Membrane.

## Images



12.5% SDS-PAGE analysis of ab114153, stained with Coomassie Blue.

**Please note:** All products are "FOR RESEARCH USE ONLY AND ARE NOT INTENDED FOR DIAGNOSTIC OR THERAPEUTIC USE"

## Our Abpromise to you: Quality guaranteed and expert technical support

- Replacement or refund for products not performing as stated on the datasheet
- Valid for 12 months from date of delivery
- Response to your inquiry within 24 hours
- We provide support in Chinese, English, French, German, Japanese and Spanish
- Extensive multi-media technical resources to help you
- We investigate all quality concerns to ensure our products perform to the highest standards

If the product does not perform as described on this datasheet, we will offer a refund or replacement. For full details of the Abpromise, please visit <http://www.abcam.com/abpromise> or contact our technical team.

## Terms and conditions

- Guarantee only valid for products bought direct from Abcam or one of our authorized distributors