

Product datasheet

Recombinant Human CD6 protein ab116984

1 Image

Overview

Product name	Recombinant Human CD6 protein
Protein length	Protein fragment

Description

Nature	Recombinant
Source	Wheat germ
Amino Acid Sequence	
Accession	P30203
Species	Human
Sequence	CGTAVERPKGLPHSLSGRMYYSNNGEELTLNCSWRFNNSNLCSQSLAAR VLCSASRSLHNLSTPEVPASVQTVTIESSVTVKIENKESRELM
Molecular weight	36 kDa including tags
Amino acids	308 to 400

Specifications

Our [Abpromise guarantee](#) covers the use of **ab116984** in the following tested applications.

The application notes include recommended starting dilutions; optimal dilutions/concentrations should be determined by the end user.

Applications	Western blot SDS-PAGE ELISA
Form	Liquid
Additional notes	Protein concentration is above or equal to 0.05 mg/ml. Best used within three months from the date of receipt.

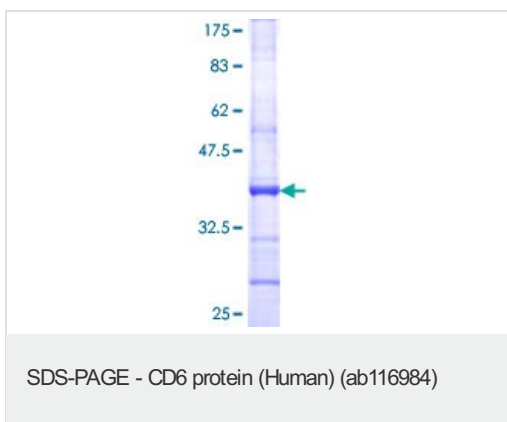
Preparation and Storage

Stability and Storage	Shipped on dry ice. Upon delivery aliquot and store at -80°C. Avoid freeze / thaw cycles. pH: 8.00 Constituents: 0.3% Glutathione, 0.79% Tris HCl
------------------------------	---

General Info

Function	Involved in cell adhesion. Binds to CD166.
Tissue specificity	Expressed by thymocytes, mature T-cells, a subset of B-cells known as B-1 cells, and by some cells in the brain.
Sequence similarities	Contains 3 SRCR domains.
Post-translational modifications	After T-cell activation, becomes hyperphosphorylated on Ser and Thr residues and phosphorylated on Tyr residues. Contains intrachain disulfide bond(s).
Cellular localization	Membrane.

Recombinant Human CD6 protein images



12.5% SDS-PAGE showing ab116984 at approximately 35.86kDa.
Stained with Coomassie Blue.

Please note: All products are "FOR RESEARCH USE ONLY AND ARE NOT INTENDED FOR DIAGNOSTIC OR THERAPEUTIC USE"

Our Abpromise to you: Quality guaranteed and expert technical support

- Replacement or refund for products not performing as stated on the datasheet
- Valid for 12 months from date of delivery
- Response to your inquiry within 24 hours
- We provide support in Chinese, English, French, German, Japanese and Spanish
- Extensive multi-media technical resources to help you
- We investigate all quality concerns to ensure our products perform to the highest standards

If the product does not perform as described on this datasheet, we will offer a refund or replacement. For full details of the Abpromise, please visit <http://www.abcam.com/abpromise> or contact our technical team.

Terms and conditions

- Guarantee only valid for products bought direct from Abcam or one of our authorized distributors