

Product datasheet

Recombinant Human CLK1 protein ab114706

1 Image

Overview

Product name	Recombinant Human CLK1 protein
Protein length	Full length protein

Description

Nature	Recombinant
Source	Wheat germ

Amino Acid Sequence

Accession	P49759
Species	Human
Sequence	MRHSKRITYCPDWDDKDWDYGKWRSSSSHKRRKRSHSSAQENKRCKYNHSK MCDSHYLESRSINEKDYHSRRYIDEYRNDYTQGCEP GHRQRDHESRYQNH SSKSSGRSGRSSYKSKHRIHHSTSHRRSHGKSHRRKRTRSVEDDEEGLI CQSGDVL SARYEMDTLGE GAFGKVVECIDHKAGGRHVAVKIVKNVDRYC EAARSEIQVLEHLNTTDPNSTFRCVQMLEWFEHHGHICVFELLGLSTYD FIKENGFLPFRLDHIRKMAYQICKSVNFLHSNKLTHDLPENILFVQSD YTEAYNPKIKRDERTLINPDIKVDFGSATYDDEHHSTLVSTRHYRAPEV ILALGWSQPCDVWSIGCILIEYLGFTVFPTHDSKEHLAMMERILGPLPK HMIQKTRKRKYFHHDRLDWEHSSAGRYVSRRCPLKEFMLSQDVEHERL FDLIQKMLEYDPAKRITLREALKHPFFDLLKCSI

Molecular weight	79 kDa including tags
Amino acids	1 to 484

Specifications

Our [Abpromise guarantee](#) covers the use of **ab114706** in the following tested applications.

The application notes include recommended starting dilutions; optimal dilutions/concentrations should be determined by the end user.

Applications	ELISA SDS-PAGE Western blot
Form	Liquid

Additional notes

Protein concentration is above or equal to 0.05 mg/ml. Best use within three months from the date of receipt of this protein.

Preparation and Storage

Stability and Storage

Shipped on dry ice. Upon delivery aliquot and store at -80°C. Avoid freeze / thaw cycles.

pH: 8.00

Constituents: 0.3% Glutathione, 0.79% Tris HCl

General Info

Function

Phosphorylates serine- and arginine-rich (SR) proteins of the spliceosomal complex may be a constituent of a network of regulatory mechanisms that enable SR proteins to control RNA splicing. Phosphorylates serines, threonines and tyrosines.

Sequence similarities

Belongs to the protein kinase superfamily. CMGC Ser/Thr protein kinase family. Lammer subfamily.

Contains 1 protein kinase domain.

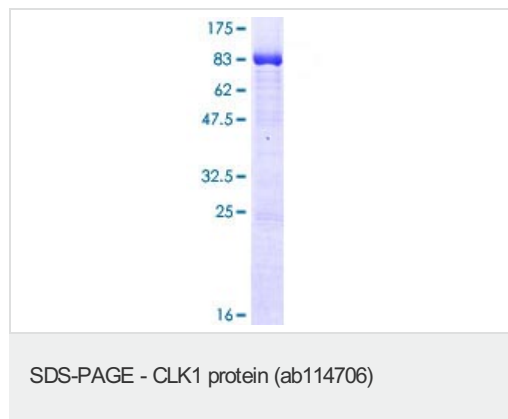
Post-translational modifications

Autophosphorylates on all three types of residues.

Cellular localization

Nucleus.

Images



12.5% SDS-PAGE showing ab114706 at approximately 79.31 kDa stained with Coomassie Blue.

Please note: All products are "FOR RESEARCH USE ONLY AND ARE NOT INTENDED FOR DIAGNOSTIC OR THERAPEUTIC USE"

Our Abpromise to you: Quality guaranteed and expert technical support

- Replacement or refund for products not performing as stated on the datasheet
- Valid for 12 months from date of delivery
- Response to your inquiry within 24 hours
- We provide support in Chinese, English, French, German, Japanese and Spanish
- Extensive multi-media technical resources to help you

- We investigate all quality concerns to ensure our products perform to the highest standards

If the product does not perform as described on this datasheet, we will offer a refund or replacement. For full details of the Abpromise, please visit <http://www.abcam.com/abpromise> or contact our technical team.

Terms and conditions

- Guarantee only valid for products bought direct from Abcam or one of our authorized distributors