

Product datasheet

Recombinant Human CLUAP1 protein ab161521

1 Image

Overview

Product name	Recombinant Human CLUAP1 protein
Protein length	Full length protein

Description

Nature	Recombinant
Source	Wheat germ

Amino Acid Sequence

Species	Human
Sequence	MRTEAIARPLEINETEKVMRIAIKEILTQVQKTKDLLNNVASDEANLEAK IEKRKLELERNRKRLETLQSVRPCFMDEYEKTEEELQKQYDYLEKFNL TYLEQQLEDHHRMEQERFEEAKNTLCLIQNKLKEEEKRLLKSGSNDDSDI DIQEDDESSELEERRLPKPQTAMEMLMQGRPGRKRVGTMQGGDSDDNED SEESEIDMEDDDDEDDDDLEDESISLSPTKPNRRVRKSEPLDESNDNF
Amino acids	1 to 247
Tags	proprietary tag N-Terminus

Specifications

Our [Abpromise guarantee](#) covers the use of **ab161521** in the following tested applications.

The application notes include recommended starting dilutions; optimal dilutions/concentrations should be determined by the end user.

Applications	ELISA Western blot
Form	Liquid
Additional notes	Protein concentration is above or equal to 0.05 mg/ml.

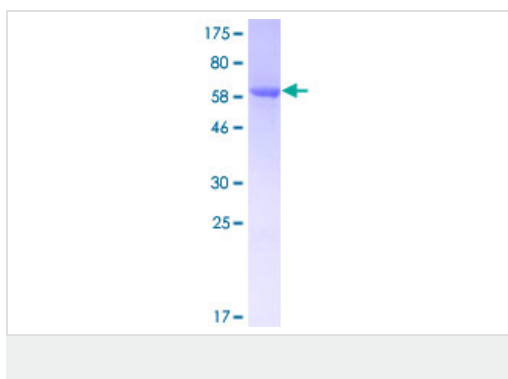
Preparation and Storage

Stability and Storage	Shipped on dry ice. Upon delivery aliquot and store at -80°C. Avoid freeze / thaw cycles. pH: 8.00 Constituents: 0.31% Glutathione, 0.79% Tris HCl
------------------------------	--

General Info

Function	Required for cilia biogenesis. Appears to function within the multiple intraflagellar transport complex B (IFT-B). Key regulator of hedgehog signaling.
Tissue specificity	Expressed in testis, thyroid and trachea and to a lower extent in spinal cord and adrenal gland. Highly expressed in colon cancer and osteosarcoma cell lines.
Sequence similarities	Belongs to the CLUAP1 family.
Cellular localization	Nucleus. Cell projection, cilium.

Images



ab161521 on a 12.5% SDS-PAGE stained with Coomassie Blue.

Please note: All products are "FOR RESEARCH USE ONLY AND ARE NOT INTENDED FOR DIAGNOSTIC OR THERAPEUTIC USE"

Our Abpromise to you: Quality guaranteed and expert technical support

- Replacement or refund for products not performing as stated on the datasheet
- Valid for 12 months from date of delivery
- Response to your inquiry within 24 hours
- We provide support in Chinese, English, French, German, Japanese and Spanish
- Extensive multi-media technical resources to help you
- We investigate all quality concerns to ensure our products perform to the highest standards

If the product does not perform as described on this datasheet, we will offer a refund or replacement. For full details of the Abpromise, please visit <http://www.abcam.com/abpromise> or contact our technical team.

Terms and conditions

- Guarantee only valid for products bought direct from Abcam or one of our authorized distributors