

Product datasheet

Recombinant Human Centrin 1 protein ab114364

1 Image

Overview

<b>Product name</b>	Recombinant Human Centrin 1 protein
<b>Protein length</b>	Protein fragment

Description

<b>Nature</b>	Recombinant
<b>Source</b>	Wheat germ
<b>Amino Acid Sequence</b>	
<b>Accession</b>	<a href="#">Q12798</a>
<b>Species</b>	Human
<b>Sequence</b>	MASGFKKPSAASTGQKRKVAPKPELTEDQKQEVREAFDLFDVDGSGTIDA KELKVAMRALGFEPKKEEMKKMISEVDREGTGKISFNDFLAVMTQKMSEK
<b>Molecular weight</b>	37 kDa including tags
<b>Amino acids</b>	1 to 100

Specifications

Our [Abpromise guarantee](#) covers the use of **ab114364** in the following tested applications.

The application notes include recommended starting dilutions; optimal dilutions/concentrations should be determined by the end user.

<b>Applications</b>	ELISA SDS-PAGE Western blot
<b>Form</b>	Liquid
<b>Additional notes</b>	Protein concentration is above or equal to 0.05 mg/ml. Best use within three months from the date of receipt of this protein.

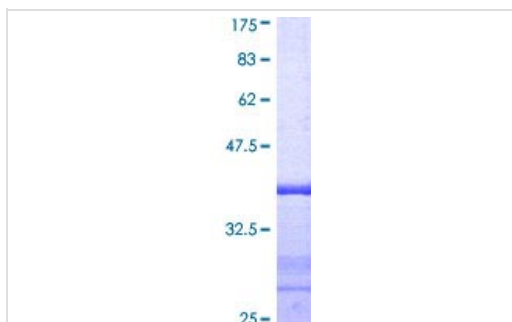
Preparation and Storage

<b>Stability and Storage</b>	Shipped on dry ice. Upon delivery aliquot and store at -80°C. Avoid freeze / thaw cycles. pH: 8.00 Constituents: 0.3% Glutathione, 0.79% Tris HCl
------------------------------	---

## General Info

<b>Function</b>	Plays a fundamental role in microtubule-organizing center structure and function.
<b>Sequence similarities</b>	Belongs to the centrin family. Contains 4 EF-hand domains.
<b>Cellular localization</b>	Cytoplasm > cytoskeleton > centrosome. Centrosome of interphase and mitotic cells.

## Recombinant Human Centrin 1 protein images



SDS-PAGE - Centrin 1 protein (ab114364)

12.5% SDS-PAGE showing ab114364 at approximately 36.63kDa stained with Coomassie Blue.

**Please note:** All products are "FOR RESEARCH USE ONLY AND ARE NOT INTENDED FOR DIAGNOSTIC OR THERAPEUTIC USE"

## Our Abpromise to you: Quality guaranteed and expert technical support

- Replacement or refund for products not performing as stated on the datasheet
- Valid for 12 months from date of delivery
- Response to your inquiry within 24 hours
- We provide support in Chinese, English, French, German, Japanese and Spanish
- Extensive multi-media technical resources to help you
- We investigate all quality concerns to ensure our products perform to the highest standards

If the product does not perform as described on this datasheet, we will offer a refund or replacement. For full details of the Abpromise, please visit <http://www.abcam.com/abpromise> or contact our technical team.

## Terms and conditions

- Guarantee only valid for products bought direct from Abcam or one of our authorized distributors