

Product datasheet

Recombinant Human Cofilin protein ab62958

1 Image

Overview

Product name	Recombinant Human Cofilin protein
Protein length	Full length protein

Description

Nature	Recombinant
Source	Escherichia coli

Amino Acid Sequence

Species	Human
Sequence	MGSSHHHHHH SSSLVPRGSH MASGVAVSDG VIKVFNDMKV RKSSTPEEVK KRKKAVLFCL SEDKKNILE EGKEILVGDV GQTVDDPYAT FVKMLPKDC RYALYDATYE TKESKKEDLV FIFWAPESAP LSKSMYASS KDAIKKKLTG IKHELQANCY EEVKDRCTLA EKLGGSAVIS LEGKPL

Specifications

Our [Abpromise guarantee](#) covers the use of **ab62958** in the following tested applications.

The application notes include recommended starting dilutions; optimal dilutions/concentrations should be determined by the end user.

Applications	SDS-PAGE Western blot
Purity	> 95 % SDS-PAGE. purified by using conventional chromatography techniques
Form	Liquid

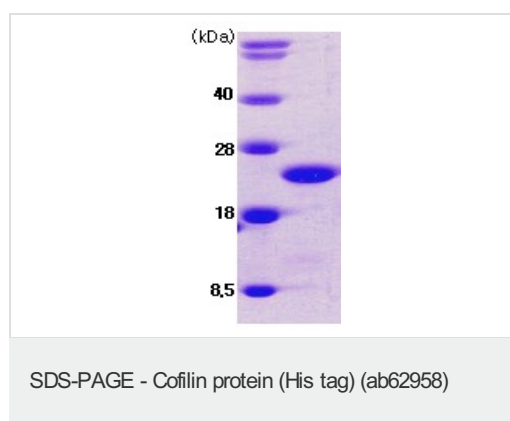
Preparation and Storage

Stability and Storage	Shipped at 4°C. Upon delivery aliquot and store at -20°C. Avoid freeze / thaw cycles. Preservative: None Constituents: 10% Glycerol, 20mM Tris, pH 8
------------------------------	--

General Info

Function	Controls reversibly actin polymerization and depolymerization in a pH-sensitive manner. It has the ability to bind G- and F-actin in a 1:1 ratio of cofilin to actin. It is the major component of intranuclear and cytoplasmic actin rods.
Tissue specificity	Widely distributed in various tissues.
Sequence similarities	Belongs to the actin-binding proteins ADF family. Contains 1 ADF-H domain.
Post-translational modifications	Phosphorylated on Ser-3 in resting cells.
Cellular localization	Nucleus matrix. Cytoplasm > cytoskeleton. Almost completely in nucleus in cells exposed to heat shock or 10% dimethyl sulfoxide.

Images



SDS Page analysis of ab62958 (3ug, 15% gel).

Please note: All products are "FOR RESEARCH USE ONLY AND ARE NOT INTENDED FOR DIAGNOSTIC OR THERAPEUTIC USE"

Our Abpromise to you: Quality guaranteed and expert technical support

- Replacement or refund for products not performing as stated on the datasheet
- Valid for 12 months from date of delivery
- Response to your inquiry within 24 hours
- We provide support in Chinese, English, French, German, Japanese and Spanish
- Extensive multi-media technical resources to help you
- We investigate all quality concerns to ensure our products perform to the highest standards

If the product does not perform as described on this datasheet, we will offer a refund or replacement. For full details of the Abpromise, please visit <http://www.abcam.com/abpromise> or contact our technical team.

Terms and conditions

- Guarantee only valid for products bought direct from Abcam or one of our authorized distributors