

## Product datasheet

# Recombinant Human EDG3 protein ab114632

[1 Image](#)

### Overview

---

**Product name** Recombinant Human EDG3 protein

**Protein length** Protein fragment

### Description

---

**Nature** Recombinant

**Source** Wheat germ

### Amino Acid Sequence

**Accession** [Q99500](#)

**Species** Human

**Sequence** SKEMRRAFFRLVCNCLVRGRGARASPIQPALDPSRSKSSSSNNSHSPKV  
KEDLPHTAPSSCIMDKNAALQNGIFCN

**Molecular weight** 34 kDa including tags

**Amino acids** 302 to 378

### Specifications

---

Our [Abpromise guarantee](#) covers the use of **ab114632** in the following tested applications.

The application notes include recommended starting dilutions; optimal dilutions/concentrations should be determined by the end user.

**Applications** ELISA  
SDS-PAGE  
Western blot

**Form** Liquid

**Additional notes** Protein concentration is above or equal to 0.05 mg/ml. This protein is best used within three months from the date of receipt.

### Preparation and Storage

---

**Stability and Storage** Shipped on dry ice. Upon delivery aliquot and store at -80°C. Avoid freeze / thaw cycles.  
pH: 8.00

Constituents: 0.3% Glutathione, 0.79% Tris HCl

## General Info

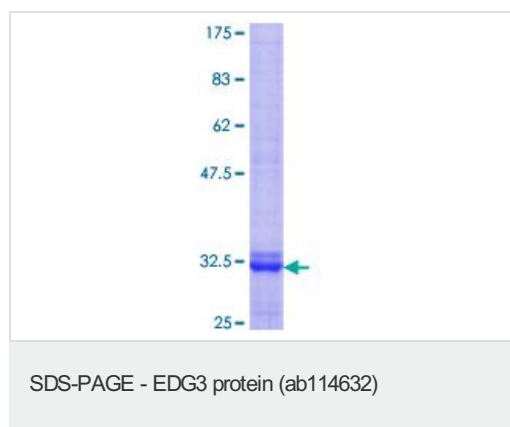
---

<b>Function</b>	Receptor for the lysosphingolipid sphingosine 1-phosphate (S1P). S1P is a bioactive lysophospholipid that elicits diverse physiological effect on most types of cells and tissues. When expressed in rat HTC4 hepatoma cells, is capable of mediating S1P-induced cell proliferation and suppression of apoptosis.
<b>Tissue specificity</b>	Expressed in all tissues, but most abundantly in heart, placenta, kidney, and liver.
<b>Sequence similarities</b>	Belongs to the G-protein coupled receptor 1 family.
<b>Cellular localization</b>	Cell membrane.

---

## Images

---



ab114632 analysed by 12.5% SDS-PAGE and stained with Coomassie Blue.

**Please note:** All products are "FOR RESEARCH USE ONLY AND ARE NOT INTENDED FOR DIAGNOSTIC OR THERAPEUTIC USE"

## Our Abpromise to you: Quality guaranteed and expert technical support

---

- Replacement or refund for products not performing as stated on the datasheet
- Valid for 12 months from date of delivery
- Response to your inquiry within 24 hours
- We provide support in Chinese, English, French, German, Japanese and Spanish
- Extensive multi-media technical resources to help you
- We investigate all quality concerns to ensure our products perform to the highest standards

If the product does not perform as described on this datasheet, we will offer a refund or replacement. For full details of the Abpromise, please visit <http://www.abcam.com/abpromise> or contact our technical team.

## Terms and conditions

---

- Guarantee only valid for products bought direct from Abcam or one of our authorized distributors