

Product datasheet

Recombinant Human EIF2D protein ab116939

[1 Image](#)

Overview

Product name	Recombinant Human EIF2D protein
Protein length	Protein fragment

Description

Nature	Recombinant
Source	Wheat germ

Amino Acid Sequence

Accession	P41214
Species	Human
Sequence	KGRICPIDITLAQRASNKKVTVVRNLEAYGLDPYSVAAILQQRCQASTTV NPAPGAKDSLQVQIQGNQVHHLGWLLLEEYQLPRKHIQGLEKALKPGKKK
Molecular weight	37 kDa including tags
Amino acids	485 to 584

Specifications

Our [Abpromise guarantee](#) covers the use of **ab116939** in the following tested applications.

The application notes include recommended starting dilutions; optimal dilutions/concentrations should be determined by the end user.

Applications	ELISA SDS-PAGE Western blot
---------------------	-----------------------------------

Form	Liquid
-------------	--------

Additional notes	Protein concentration is above or equal to 0.05 mg/ml. Best use within three months from the date of receipt of this protein.
-------------------------	--

Preparation and Storage

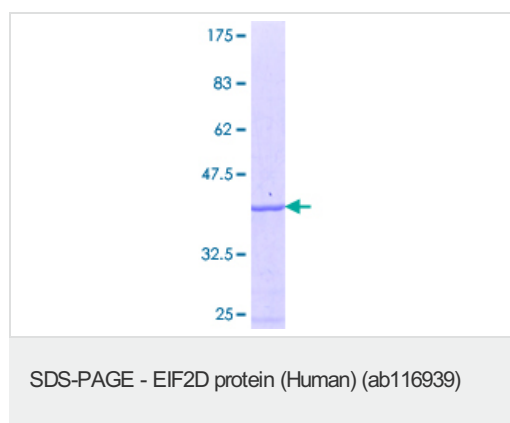
Stability and Storage	Shipped on dry ice. Upon delivery aliquot and store at -80°C. Avoid freeze / thaw cycles. pH: 8.00
------------------------------	---

Constituents: 0.3% Glutathione, 0.79% Tris HCl

General Info

Function	Trafficking receptor for phosphoglycoproteins. Localizes phosphoglycoproteins within endosomes and at the cell periphery where they participate in specific metabolic processes as well as intercellular adhesion.
Sequence similarities	Belongs to the ligatin family. Contains 1 PUA domain. Contains 1 SUI1 domain.
Developmental stage	Found during embryonic development and in early differentiated states.
Cellular localization	Membrane.

Images



12.5% SDS-PAGE stained with Coomassie
Blue showing ab116939 at approximately
36.63 kDa.

Please note: All products are "FOR RESEARCH USE ONLY AND ARE NOT INTENDED FOR DIAGNOSTIC OR THERAPEUTIC USE"

Our Abpromise to you: Quality guaranteed and expert technical support

- Replacement or refund for products not performing as stated on the datasheet
- Valid for 12 months from date of delivery
- Response to your inquiry within 24 hours
- We provide support in Chinese, English, French, German, Japanese and Spanish
- Extensive multi-media technical resources to help you
- We investigate all quality concerns to ensure our products perform to the highest standards

If the product does not perform as described on this datasheet, we will offer a refund or replacement. For full details of the Abpromise, please visit <http://www.abcam.com/abpromise> or contact our technical team.

Terms and conditions

- Guarantee only valid for products bought direct from Abcam or one of our authorized distributors