

Product datasheet

Recombinant Human ENSA protein ab92932

1 Image

Overview

Product name	Recombinant Human ENSA protein
Protein length	Full length protein

Description

Nature	Recombinant
Source	Escherichia coli

Amino Acid Sequence

Species	Human
Sequence	MGSSHHHHHH SSGLVPRGSH MSQKQEEENP AEETGEEKQD TQEKEGILPE RAEEAKLKAK YPSLGQKPGG SDFLMKRLQK GQKYFDSGDY NMAKAKMKNK QLPSAGPDKN LVTGDHIPTP QDLPQRKSSL VTSKLAGGQV E

Specifications

Our [Abpromise guarantee](#) covers the use of **ab92932** in the following tested applications.

The application notes include recommended starting dilutions; optimal dilutions/concentrations should be determined by the end user.

Applications	SDS-PAGE
Purity	> 90 % SDS-PAGE. ab92932 is purified using conventional chromatography techniques.
Form	Liquid

Preparation and Storage

Stability and Storage	Shipped at 4°C. Upon delivery aliquot and store at -20°C or -80°C. Avoid repeated freeze / thaw cycles. Preservative: None Constituents: 10% Glycerol, 20mM Tris HCl, 1mM DTT, pH 8.0
------------------------------	---

General Info

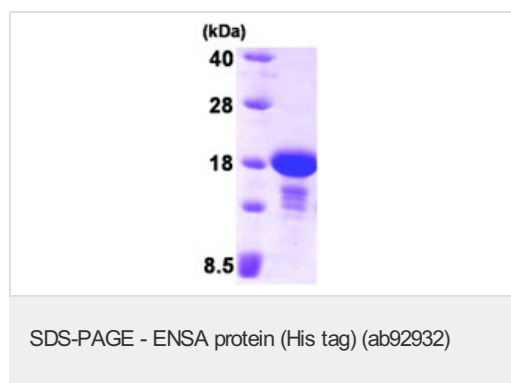
Relevance

ENSA (Alpha endosulfine) is expressed in a wide range of tissues including muscle, brain, and endocrine tissues. The recombinant protein inhibits binding of labeled glibenclamide to beta cell membranes. It also inhibits cloned K(ATP) channel currents and thereby stimulates insulin secretion. It was proposed that endosulfine is an endogenous regulator of the K(ATP) channel, which has a key role in the control of insulin release and, more generally, couples cell metabolism to electrical activity.

Cellular localization

Cytoplasmic

Images



ab92932 staining ENSA protein on a 15% SDS-PAGE (3 µg)

Please note: All products are "FOR RESEARCH USE ONLY AND ARE NOT INTENDED FOR DIAGNOSTIC OR THERAPEUTIC USE"

Our Abpromise to you: Quality guaranteed and expert technical support

- Replacement or refund for products not performing as stated on the datasheet
- Valid for 12 months from date of delivery
- Response to your inquiry within 24 hours
- We provide support in Chinese, English, French, German, Japanese and Spanish
- Extensive multi-media technical resources to help you
- We investigate all quality concerns to ensure our products perform to the highest standards

If the product does not perform as described on this datasheet, we will offer a refund or replacement. For full details of the Abpromise, please visit <http://www.abcam.com/abpromise> or contact our technical team.

Terms and conditions

- Guarantee only valid for products bought direct from Abcam or one of our authorized distributors