

Product datasheet

Recombinant Human ID3 protein **ab114366**

1 Image

Overview

Product name Recombinant Human ID3 protein
Protein length Protein fragment

Description

Nature Recombinant
Source Wheat germ

Amino Acid Sequence

Accession [Q02535](#)
Species Human
Sequence MKALSPVRGCYEAVCCLSERSLAIARGRGKGPAAEEPLSLDDMNHCYSR
 LRELVPGVPRGTQLSQVEILQRVIDYLDLQVV
Molecular weight 35 kDa including tags
Amino acids 1 to 83

Specifications

Our [Abpromise guarantee](#) covers the use of **ab114366** in the following tested applications.
 The application notes include recommended starting dilutions; optimal dilutions/concentrations should be determined by the end user.

Applications ELISA
 SDS-PAGE
 Western blot
Form Liquid
Additional notes Protein concentration is above or equal to 0.05 mg/ml. Best use within three months from the date of receipt of this protein.

Preparation and Storage

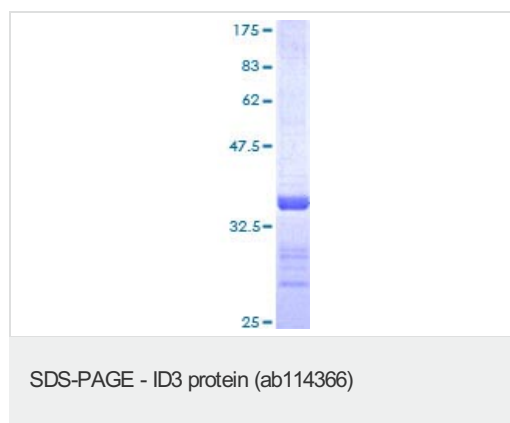
Stability and Storage Shipped on dry ice. Upon delivery aliquot and store at -80°C. Avoid freeze / thaw cycles.
 pH: 8.00

Constituents: 0.3% Glutathione, 0.79% Tris HCl

General Info

Function	ID (inhibitor of DNA binding) HLH proteins lack a basic DNA-binding domain but are able to form heterodimers with other HLH proteins, thereby inhibiting DNA binding. ID-3 inhibits the binding of E2A-containing protein complexes to muscle creatine kinase E-box enhancer. May inhibit other transcription factors.
Tissue specificity	Expressed abundantly in lung, kidney and adrenal gland, but not in adult brain.
Sequence similarities	Contains 1 basic helix-loop-helix (bHLH) domain.
Cellular localization	Nucleus.

Images



12.5% SDS-PAGE showing ab114366 at approximately 34.76kDa stained with Coomassie Blue.

Please note: All products are "FOR RESEARCH USE ONLY AND ARE NOT INTENDED FOR DIAGNOSTIC OR THERAPEUTIC USE"

Our Abpromise to you: Quality guaranteed and expert technical support

- Replacement or refund for products not performing as stated on the datasheet
- Valid for 12 months from date of delivery
- Response to your inquiry within 24 hours
- We provide support in Chinese, English, French, German, Japanese and Spanish
- Extensive multi-media technical resources to help you
- We investigate all quality concerns to ensure our products perform to the highest standards

If the product does not perform as described on this datasheet, we will offer a refund or replacement. For full details of the Abpromise, please visit <http://www.abcam.com/abpromise> or contact our technical team.

Terms and conditions

- Guarantee only valid for products bought direct from Abcam or one of our authorized distributors