

## Product datasheet

# Recombinant Human IFI35 protein ab116922

1 Image

### Overview

<b>Product name</b>	Recombinant Human IFI35 protein
<b>Protein length</b>	Full length protein

### Description

<b>Nature</b>	Recombinant
<b>Source</b>	Wheat germ

### Amino Acid Sequence

<b>Accession</b>	<a href="#">P80217</a>
<b>Species</b>	Human
<b>Sequence</b>	MSAPLDAALHALQEEQARLKMRLWDLQQLRKELGDSPKDKVPFSVPKIPL VFRGHTQQDPEVPKSLVSNLRIHCPLLAGSALITFDDPKVAEQVLQQKEH TINMEECRLRVQVQPLELPMVTTIQVMVSSQLSGRRVLVTGFPA <sup>SL</sup> RLSE EELLDKLEIFFGKTRNGGGD <sup>VD</sup> VRELLPGSVMLGFARDGVAQRLCQIGQF TVPLGGQQVPLRVSPYVNGEIQKAEIRSQPVPRSVLVLNIPDILDGPELH DVLEIHFQKPTRGGGEVEALTVVPQQQGLAVFTSESG
<b>Molecular weight</b>	58 kDa including tags
<b>Amino acids</b>	1 to 288

### Specifications

Our [Abpromise guarantee](#) covers the use of **ab116922** in the following tested applications.

The application notes include recommended starting dilutions; optimal dilutions/concentrations should be determined by the end user.

<b>Applications</b>	Western blot ELISA SDS-PAGE
<b>Form</b>	Liquid
<b>Additional notes</b>	Protein concentration is above or equal to 0.05 mg/ml. Best use within three months from the date of receipt of this protein.

### Preparation and Storage

## Stability and Storage

Shipped on dry ice. Upon delivery aliquot and store at -80°C. Avoid freeze / thaw cycles.

pH: 8.00

Constituents: 0.3% Glutathione, 0.79% Tris HCl

## General Info

### Function

Not yet known.

### Tissue specificity

In a wide range of cell types, including fibroblasts, macrophages, and epithelial cells.

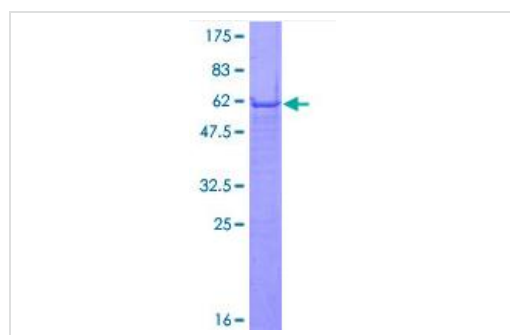
### Sequence similarities

Belongs to the NMI family.

### Cellular localization

Nucleus. Nuclear following IFN treatment.

## Images



12.5% SDS-PAGE image showing ab116922 at approx 57.75 kDa. Stained with Coomassie Blue.

SDS-PAGE - IFI35 protein (Human) (ab116922)

**Please note:** All products are "FOR RESEARCH USE ONLY AND ARE NOT INTENDED FOR DIAGNOSTIC OR THERAPEUTIC USE"

## Our Abpromise to you: Quality guaranteed and expert technical support

- Replacement or refund for products not performing as stated on the datasheet
- Valid for 12 months from date of delivery
- Response to your inquiry within 24 hours
- We provide support in Chinese, English, French, German, Japanese and Spanish
- Extensive multi-media technical resources to help you
- We investigate all quality concerns to ensure our products perform to the highest standards

If the product does not perform as described on this datasheet, we will offer a refund or replacement. For full details of the Abpromise, please visit <http://www.abcam.com/abpromise> or contact our technical team.

## Terms and conditions

- Guarantee only valid for products bought direct from Abcam or one of our authorized distributors