

Product datasheet

Recombinant Human IFITM2 protein ab92922

1 Image

Overview

Product name Recombinant Human IFITM2 protein
Protein length Full length protein

Description

Nature Recombinant
Source Escherichia coli
Amino Acid Sequence
Species Human

Specifications

Our [Abpromise guarantee](#) covers the use of **ab92922** in the following tested applications. The application notes include recommended starting dilutions; optimal dilutions/concentrations should be determined by the end user.

Applications Western blot
 ELISA
 SDS-PAGE
 Mass Spectrometry
Purity > 90 % SDS-PAGE.

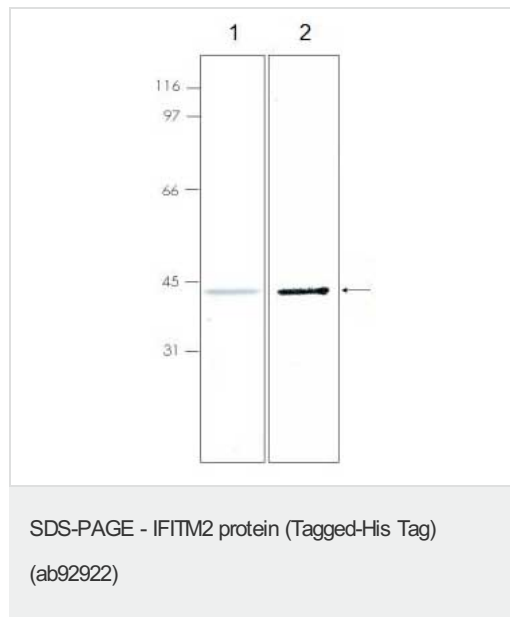
Preparation and Storage

Stability and Storage Shipped on dry ice. Upon delivery aliquot and store at -80°C. Avoid freeze / thaw cycles.
 Preservative: 100mM Imidazole
 Constituents: 0.5M Sodium chloride, 20mM Tris HCl, 1mM Beta mercaptoethanol, pH 8.0

General Info

Relevance IFITM2 belongs to the CD225 family and is induced by alpha and gamma interferons.

Images



ab92922 analysed on 10% SDS-PAGE and stained with Coomassie Blue (1) or detected by western blot analysis with an antibody to the proprietary tag (2).

Please note: All products are "FOR RESEARCH USE ONLY AND ARE NOT INTENDED FOR DIAGNOSTIC OR THERAPEUTIC USE"

Our Abpromise to you: Quality guaranteed and expert technical support

- Replacement or refund for products not performing as stated on the datasheet
- Valid for 12 months from date of delivery
- Response to your inquiry within 24 hours
- We provide support in Chinese, English, French, German, Japanese and Spanish
- Extensive multi-media technical resources to help you
- We investigate all quality concerns to ensure our products perform to the highest standards

If the product does not perform as described on this datasheet, we will offer a refund or replacement. For full details of the Abpromise, please visit <http://www.abcam.com/abpromise> or contact our technical team.

Terms and conditions

- Guarantee only valid for products bought direct from Abcam or one of our authorized distributors