

Product datasheet

Recombinant Human IL5RA protein (Fc Chimera)
 ab83828

3 Images

Overview

Product name	Recombinant Human IL5RA protein (Fc Chimera)
Protein length	Protein fragment

Description

Nature	Recombinant
Source	HEK 293 cells

Amino Acid Sequence

Accession	Q01344
Species	Human
Sequence	DLLPDEKISLLPPVNFTIKVTGLAQVLLQWKPNPDQEQRNVNLEYQVKIN APKEDDYETRITESKCVTILHKGFSASVRTILQNDHSLASSWASAEHLA PPGSPGTSIVNLTCTTNTTEDNYSRLRSYQVSLHCTWLVTGTDAPEDTQYF LYRYGSWTEECQEYSKDTLGRNIACWFPRTFILSKGRDWLAVLVNGSSK HSAIRPFDQLFALHAIDQINPPLNVTAEIEGTRLSIQWEKPVSAFPIHCF DYEVKIHNTRNGYLQIEKLMTNAFISIIDDLSKYDVQVRAAVSSMCREAG LW

Molecular weight	62 kDa including tags
Amino acids	21 to 322
Additional sequence information	Chimeric Protein: A DNA sequence (aa 21-322) was fused to the Fc region of human IgG1 (aa 93-330).

Specifications

Our [Abpromise guarantee](#) covers the use of **ab83828** in the following tested applications.
 The application notes include recommended starting dilutions; optimal dilutions/concentrations should be determined by the end user.

Applications	SDS-PAGE
Purity	>95% by SDS-PAGE .
Form	Lyophilised

Additional notes

Molecular mass: Chimera migrates as a broad band between 70 and 80 kDa in SDS-PAGE due to post-translation modifications, in particular glycosylation. This compares with the unmodified Chimera that has a predicted molecular mass of 62.1 kDa. The final cellular processed form of the protein is expected to be 301 amino acids in length.

pI: Chimera separates into a number of isoforms with a pI between 5.8 and 7.0 in 2D PAGE due to post-translational modifications, in particular glycosylation. This compares with the unmodified Chimera that has a predicted pI of 6.34.

Chimera consists of 10-25% carbohydrate by weight.

Chimera has N-linked and O-linked oligosaccharides.

Preparation and Storage

Stability and Storage

Shipped at 4°C. Store at +4°C short term (1-2 weeks). Upon delivery aliquot. Store at -20°C long term. Avoid freeze / thaw cycle. Reconstitute for long term storage.

Constituents: 89% PBS, 10% Trehalose, 1% Human serum albumin

Reconstitution

It is recommended that 0.5 ml of sterile phosphate-buffered saline be added to the vial.

Following reconstitution short-term storage at 4°C is recommended, and longer-term storage of aliquots at -18 to -20°C. Repeated freeze thawing is not recommended.

General Info

Function

This is the receptor for interleukin-5. The alpha chain binds to IL5.

Tissue specificity

Expressed on eosinophils and basophils.

Sequence similarities

Belongs to the type I cytokine receptor family. Type 5 subfamily.

Domain

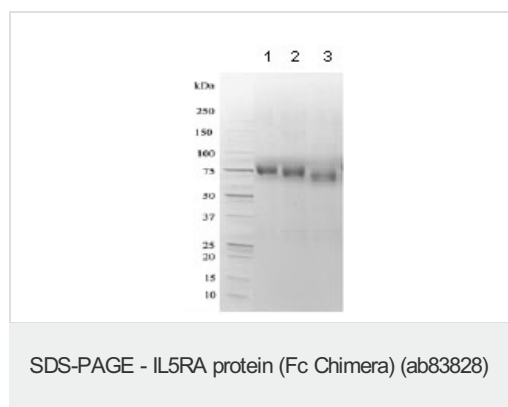
The WSXWS motif appears to be necessary for proper protein folding and thereby efficient intracellular transport and cell-surface receptor binding.

The box 1 motif is required for JAK interaction and/or activation.

Cellular localization

Membrane.

Images



1D SDS-PAGE of ab83828 before and after treatment with glycosidases to remove oligosaccharides.

Lane 1: ab83828

Lane 2: ab83828 treated with PNGase F to remove potential N-linked glycans

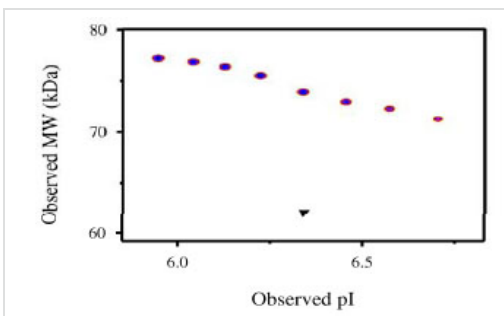
Lane 3: ab83828 treated with a glycosidase cocktail to remove potential N- and O-linked glycans.

10 µg protein loaded per lane; Deep Purple™ stained.



SDS-PAGE - IL5RA protein (Fc Chimera) (ab83828)

A sample of ab83828 without carrier protein was reduced and alkylated and focused on a 3-10 IPG strip then run on a 4-20% Tris-HCl 2D gel. 40 µg protein loaded per lane; Deep Purple™ stained.



SDS-PAGE - Human IL5RA protein fragment (ab83828)

Densitometry of protein isoforms visualised by 2-DE.

The densitometry scan demonstrates the purified Human cell expressed protein exists in multiple isoforms, which differ according to their level of post-translational modification.

The triangle indicates the theoretical MW and pI of the protein.

Please note: All products are "FOR RESEARCH USE ONLY AND ARE NOT INTENDED FOR DIAGNOSTIC OR THERAPEUTIC USE"

Our Abpromise to you: Quality guaranteed and expert technical support

- Replacement or refund for products not performing as stated on the datasheet
- Valid for 12 months from date of delivery
- Response to your inquiry within 24 hours
- We provide support in Chinese, English, French, German, Japanese and Spanish
- Extensive multi-media technical resources to help you
- We investigate all quality concerns to ensure our products perform to the highest standards

If the product does not perform as described on this datasheet, we will offer a refund or replacement. For full details of the Abpromise, please visit <http://www.abcam.com/abpromise> or contact our technical team.

Terms and conditions

- Guarantee only valid for products bought direct from Abcam or one of our authorized distributors