

Product datasheet

Recombinant Human Indoleamine 2, 3-dioxygenase protein ab114329

1 Image

Overview

Product name	Recombinant Human Indoleamine 2, 3-dioxygenase protein
Protein length	Full length protein

Description

Nature	Recombinant
Source	Wheat germ

Amino Acid Sequence

Accession	P14902
Species	Human
Sequence	<p>MAHAMENSWT ISKEYHIDEE VGFALPNPQE NLPDFYNDWM FIAKHLPLDI ESGQLRERVE KLNMLSIDHL TDHKSQRLAR LVLGCITMAY VWGKGHGDVR KVLPRNIAVP YCQLSKKLEL PPILVYADCV LANWKKKDPN KPLTYENMDV LFSFRDGDGS KGFFLVSLLV EIAAASAIKV IPTVFKAMQM QERDTLLKAL LEIASCLEKA LQVFHQIHDH VNPKAFFSVL RYLSGWKGN PQLSDGLVYE GFWEDPKEFA GGSAGQSSVF QCFDVLLGIQ QTAGGGHAAQ FLQDMRRYMP PAHRNFLCSL ESNPSVREFV LSKGDAGLRE AYDACVKALV SLRSYHLQV TKYLIPASQ QPKENKTSER PSKLEAKGTG GTDLMNFKT VRSTTEKSLK KEG</p>
Molecular weight	70 kDa including tags
Amino acids	1 to 403

Specifications

Our [Abpromise guarantee](#) covers the use of **ab114329** in the following tested applications.

The application notes include recommended starting dilutions; optimal dilutions/concentrations should be determined by the end user.

Applications	SDS-PAGE ELISA Western blot
Form	Liquid
Additional notes	Protein concentration is above or equal to 0.05 mg/ml

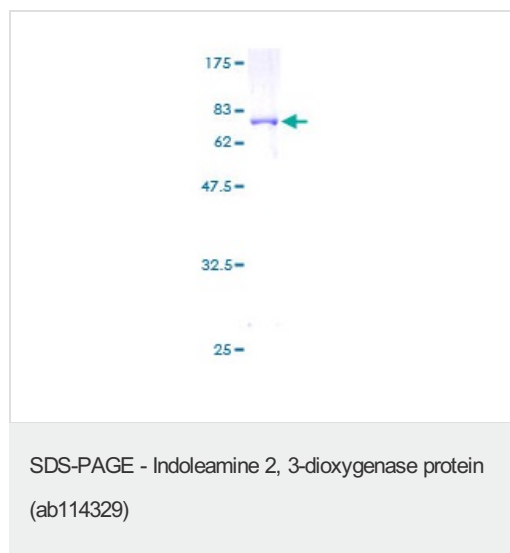
Preparation and Storage

Stability and Storage	Shipped on dry ice. Upon delivery aliquot and store at -80°C. Avoid freeze / thaw cycles. pH: 8.00 Constituents: 0.3% Glutathione, 0.79% Tris HCl
------------------------------	---

General Info

Function	Catalyzes the cleavage of the pyrrol ring of tryptophan and incorporates both atoms of a molecule of oxygen.
Pathway	Amino-acid degradation; L-tryptophan degradation via kynurenine pathway; L-kynurenine from L-tryptophan: step 1/2.
Sequence similarities	Belongs to the indoleamine 2,3-dioxygenase family.

Images



ab114329 analysed on a 12.5% SDS-PAGE gel stained with Coomassie Blue.

Please note: All products are "FOR RESEARCH USE ONLY AND ARE NOT INTENDED FOR DIAGNOSTIC OR THERAPEUTIC USE"

Our Abpromise to you: Quality guaranteed and expert technical support

- Replacement or refund for products not performing as stated on the datasheet
- Valid for 12 months from date of delivery
- Response to your inquiry within 24 hours

- We provide support in Chinese, English, French, German, Japanese and Spanish
- Extensive multi-media technical resources to help you
- We investigate all quality concerns to ensure our products perform to the highest standards

If the product does not perform as described on this datasheet, we will offer a refund or replacement. For full details of the Abpromise, please visit <http://www.abcam.com/abpromise> or contact our technical team.

Terms and conditions

- Guarantee only valid for products bought direct from Abcam or one of our authorized distributors