

## Product datasheet

# Recombinant Human Integrin alpha 1 protein ab112310

[1 References](#) [1 Image](#)

### Overview

---

<b>Product name</b>	Recombinant Human Integrin alpha 1 protein
<b>Protein length</b>	Protein fragment

### Description

---

<b>Nature</b>	Recombinant
<b>Source</b>	Wheat germ

### Amino Acid Sequence

<b>Accession</b>	<a href="#">P56199</a>
<b>Species</b>	Human
<b>Sequence</b>	QFYSSASEYHISIAANETVPEVINSTEDIGNEINIFYLIRKSGSFMPPEL KLSISFPNMTSNGYPVLYPTGLSSSENANCRPHIFEDPFSINSGKKMTTS TDHLKRGTI
<b>Molecular weight</b>	38 kDa including tags
<b>Amino acids</b>	951 to 1059

### Specifications

---

Our [Abpromise guarantee](#) covers the use of **ab112310** in the following tested applications.

The application notes include recommended starting dilutions; optimal dilutions/concentrations should be determined by the end user.

<b>Applications</b>	ELISA Western blot SDS-PAGE
<b>Form</b>	Liquid
<b>Additional notes</b>	ab112310 is best used within three months from the date of receipt.

### Preparation and Storage

---

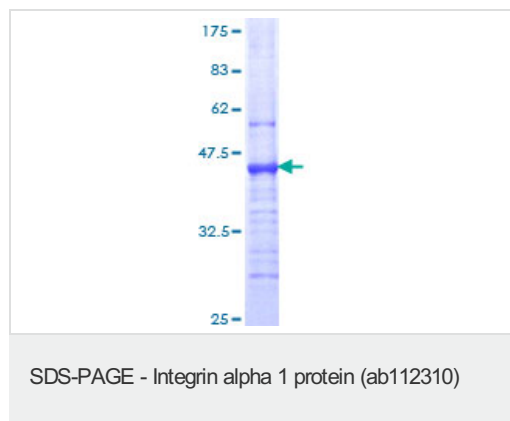
<b>Stability and Storage</b>	Shipped on dry ice. Upon delivery aliquot and store at -80°C. Avoid freeze / thaw cycles.
------------------------------	---

pH: 8.00  
Constituents: 0.79% Tris HCl, 0.31% Glutathione

## General Info

<b>Function</b>	Integrin alpha-1/beta-1 is a receptor for laminin and collagen. It recognizes the proline-hydroxylated sequence G-F-P-G-E-R in collagen.
<b>Sequence similarities</b>	Belongs to the integrin alpha chain family. Contains 7 FG-GAP repeats. Contains 1 VWFA domain.
<b>Domain</b>	The integrin I-domain (insert) is a VWFA domain. Integrins with I-domains do not undergo protease cleavage.
<b>Cellular localization</b>	Membrane.

## Images



12.5% SDS-PAGE showing ab112310 stained with Coomassie Blue.

**Please note:** All products are "FOR RESEARCH USE ONLY AND ARE NOT INTENDED FOR DIAGNOSTIC OR THERAPEUTIC USE"

## Our Abpromise to you: Quality guaranteed and expert technical support

- Replacement or refund for products not performing as stated on the datasheet
- Valid for 12 months from date of delivery
- Response to your inquiry within 24 hours
- We provide support in Chinese, English, French, German, Japanese and Spanish
- Extensive multi-media technical resources to help you
- We investigate all quality concerns to ensure our products perform to the highest standards

If the product does not perform as described on this datasheet, we will offer a refund or replacement. For full details of the Abpromise, please visit <http://www.abcam.com/abpromise> or contact our technical team.

## Terms and conditions

- Guarantee only valid for products bought direct from Abcam or one of our authorized distributors