

Product datasheet

# Recombinant Human Integrin beta 4 binding protein ab116841

1 Image

Overview

---

**Product name** Recombinant Human Integrin beta 4 binding protein  
**Protein length** Protein fragment

Description

---

**Nature** Recombinant  
**Source** Wheat germ

Amino Acid Sequence

**Accession** [P56537](#)  
**Species** Human  
**Sequence** VLVGSYCVFSNQGGLVHPKTSIEDQDELSSLLQVPLVAGTVNRGSEVIAA  
 GMVVNDWCAFCGLDTTSTELSVVESVFKLNEAQPSTIATSMRDSLIDSLT  
**Molecular weight** 37 kDa including tags  
**Amino acids** 146 to 245

Specifications

---

Our [Abpromise guarantee](#) covers the use of **ab116841** in the following tested applications.

The application notes include recommended starting dilutions; optimal dilutions/concentrations should be determined by the end user.

**Applications** ELISA  
 SDS-PAGE  
 Western blot

**Form** Liquid

**Additional notes** Protein concentration is above or equal to 0.05 mg/ml.  
 Best use within three months from the date of receipt of this protein.

Preparation and Storage

---

**Stability and Storage** Shipped on dry ice. Upon delivery aliquot and store at -80°C. Avoid freeze / thaw cycles.

pH: 8.00

Constituents: 0.3% Glutathione, 0.79% Tris HCl

## General Info

### Function

Binds to the 60S ribosomal subunit and prevents its association with the 40S ribosomal subunit to form the 80S initiation complex in the cytoplasm. May behave as a stimulatory translation initiation factor downstream insulin/growth factors. Is also involved in ribosome biogenesis. Associates with pre-60S subunits in the nucleus and is involved in its nuclear export. Cytoplasmic release of TIF6 from 60S subunits and nuclear relocalization is promoted by a RACK1 (GNB2L1)-dependent protein kinase C activity.

### Tissue specificity

Expressed at very high levels in colon carcinoma with lower levels in normal colon and ileum and lowest levels in kidney and muscle (at protein level).

### Sequence similarities

Belongs to the eIF-6 family.

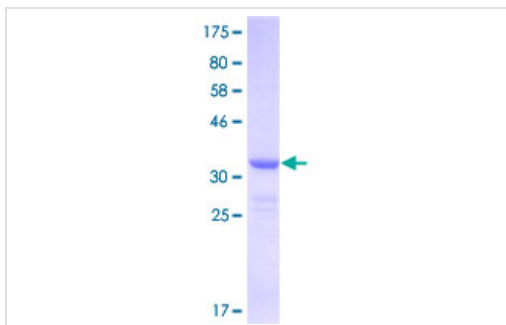
### Post-translational modifications

Phosphorylation at Ser-174 and Ser-175 promotes nuclear export.

### Cellular localization

Cytoplasm. Nucleus > nucleolus. Shuttles between cytoplasm and nucleus/nucleolus.

## Images



12.5% SDS-PAGE stained with Coomassie

Blue showing ab116841 at approximately

36.63 kDa.

SDS-PAGE - integrin beta 4 binding protein (Tagged)  
(ab116841)

**Please note:** All products are "FOR RESEARCH USE ONLY AND ARE NOT INTENDED FOR DIAGNOSTIC OR THERAPEUTIC USE"

## Our Abpromise to you: Quality guaranteed and expert technical support

- Replacement or refund for products not performing as stated on the datasheet
- Valid for 12 months from date of delivery
- Response to your inquiry within 24 hours
- We provide support in Chinese, English, French, German, Japanese and Spanish
- Extensive multi-media technical resources to help you
- We investigate all quality concerns to ensure our products perform to the highest standards

If the product does not perform as described on this datasheet, we will offer a refund or replacement. For full details of the Abpromise,

please visit <http://www.abcam.com/abpromise> or contact our technical team.

## **Terms and conditions**

---

- Guarantee only valid for products bought direct from Abcam or one of our authorized distributors