

Product datasheet

Recombinant Human LAD1 protein ab116948

[1 Image](#)

Overview

Product name	Recombinant Human LAD1 protein
Protein length	Protein fragment

Description

Nature	Recombinant
Source	Wheat germ

Amino Acid Sequence

Accession	O00515
Species	Human
Sequence	SESVKSRGLPCTELFVAPVGVASKRHLFEKELAGQSSRAEPASSRKENLRL SGVVT SRLNLWISRTQESGDQDPQEAQKASSATERTQWGQKSDSSLD AEV
Molecular weight	37 kDa including tags
Amino acids	418 to 517

Specifications

Our [Abpromise guarantee](#) covers the use of **ab116948** in the following tested applications.

The application notes include recommended starting dilutions; optimal dilutions/concentrations should be determined by the end user.

Applications	ELISA SDS-PAGE Western blot
Form	Liquid
Additional notes	Protein concentration is above or equal to 0.05 mg/ml. Best used within three months from the date of receipt.

Preparation and Storage

Stability and Storage	Shipped on dry ice. Upon delivery aliquot and store at -80°C. Avoid freeze / thaw cycles. pH: 8.00
------------------------------	---

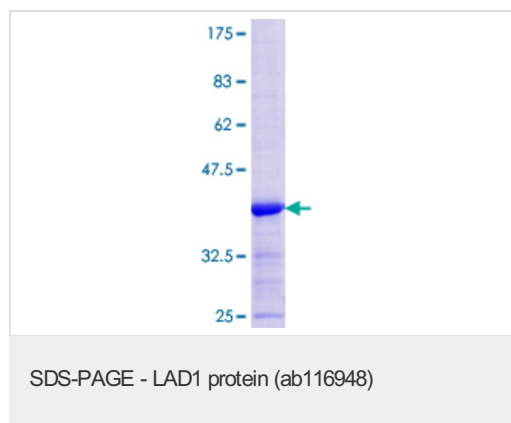
Constituents: 0.3% Glutathione, 0.79% Tris HCl

General Info

Function Anchoring filament protein which is a component of the basement membrane zone.

Cellular localization Secreted > extracellular space > extracellular matrix > basement membrane.

Images



12.5% SDS-PAGE showing ab116948 at approximately 36.63kDa stained with Coomassie Blue.

Please note: All products are "FOR RESEARCH USE ONLY AND ARE NOT INTENDED FOR DIAGNOSTIC OR THERAPEUTIC USE"

Our Abpromise to you: Quality guaranteed and expert technical support

- Replacement or refund for products not performing as stated on the datasheet
- Valid for 12 months from date of delivery
- Response to your inquiry within 24 hours
- We provide support in Chinese, English, French, German, Japanese and Spanish
- Extensive multi-media technical resources to help you
- We investigate all quality concerns to ensure our products perform to the highest standards

If the product does not perform as described on this datasheet, we will offer a refund or replacement. For full details of the Abpromise, please visit <http://www.abcam.com/abpromise> or contact our technical team.

Terms and conditions

- Guarantee only valid for products bought direct from Abcam or one of our authorized distributors