

Product datasheet

Recombinant Human MARK2 protein ab158357

1 Image

Overview

---

**Product name** Recombinant Human MARK2 protein  
**Protein length** Protein fragment

Description

---

**Nature** Recombinant  
**Source** Wheat germ

Amino Acid Sequence

**Species** Human  
**Sequence** QAAGPAIPTSNSYSKKTQSNNAENKRPEEDRESGRKASSTAKVPASPLPG  
 LERKKTTPSTNSVLSTSTNRSRNSPLLERASLGQASIQNGKDSLTPG  
**Amino acids** 401 to 500  
**Tags** proprietary tag N-Terminus

Specifications

---

Our [Abpromise guarantee](#) covers the use of **ab158357** in the following tested applications.

The application notes include recommended starting dilutions; optimal dilutions/concentrations should be determined by the end user.

**Applications** Western blot  
 ELISA  
**Form** Liquid  
**Additional notes** Protein concentration is above or equal to 0.05 mg/ml.

Preparation and Storage

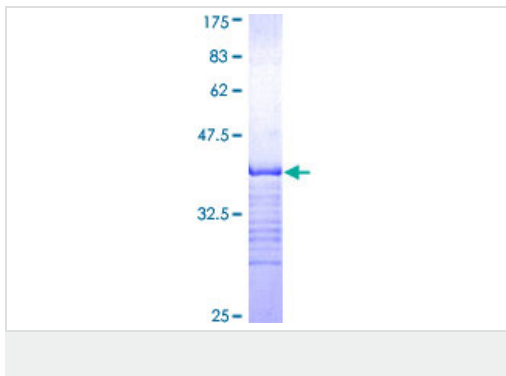
---

**Stability and Storage** Shipped on dry ice. Upon delivery aliquot and store at -80°C. Avoid freeze / thaw cycles.  
 pH: 8.00  
 Constituents: 0.31% Glutathione, 0.79% Tris HCl

General Info

<b>Function</b>	Role in epithelial morphogenesis. Modulates the developmental decision to build a columnar versus a hepatic epithelial cell apparently by promoting a switch from a direct to a transcytotic mode of apical protein delivery. Essential for the asymmetric development of membrane domains of polarized epithelial cells. One or more isoforms may play a role in graft rejection.
<b>Tissue specificity</b>	High levels of expression in heart, brain, skeletal muscle and pancreas, lower levels observed in lung, liver and kidney.
<b>Sequence similarities</b>	Belongs to the protein kinase superfamily. CAMK Ser/Thr protein kinase family. MARK subfamily. Contains 1 KA1 (kinase-associated) domain. Contains 1 protein kinase domain. Contains 1 UBA domain.
<b>Cellular localization</b>	Cell membrane. Phosphorylated by PRKCZ in polarized epithelial cells, resulting in an interaction with YWHAZ which promotes relocation from the lateral to the apical membrane.

## Images



ab158357 on a 12.5% SDS-PAGE stained with Coomassie Blue.

**Please note:** All products are "FOR RESEARCH USE ONLY AND ARE NOT INTENDED FOR DIAGNOSTIC OR THERAPEUTIC USE"

## Our Abpromise to you: Quality guaranteed and expert technical support

- Replacement or refund for products not performing as stated on the datasheet
- Valid for 12 months from date of delivery
- Response to your inquiry within 24 hours
- We provide support in Chinese, English, French, German, Japanese and Spanish
- Extensive multi-media technical resources to help you
- We investigate all quality concerns to ensure our products perform to the highest standards

If the product does not perform as described on this datasheet, we will offer a refund or replacement. For full details of the Abpromise, please visit <http://www.abcam.com/abpromise> or contact our technical team.

## Terms and conditions

- Guarantee only valid for products bought direct from Abcam or one of our authorized distributors