

Product datasheet

Recombinant Human MASH1/Achaete-scute homolog 1 protein ab114273

1 Image

Overview

Product name	Recombinant Human MASH1/Achaete-scute homolog 1 protein
Protein length	Protein fragment

Description

Nature	Recombinant
Source	Wheat germ

Amino Acid Sequence

Accession	P50553
Species	Human
Sequence	GFATLREHVPNGAANKKMSKVETLRSAYEYIRALQQLLDEHDAVSAAFQA GVLSPITSPNYSNDLNSMAGSPVSSYSSDEGSYDPLSPPEEQELLDFTNWF
Molecular weight	37 kDa including tags
Amino acids	137 to 236

Specifications

Our [Abpromise guarantee](#) covers the use of **ab114273** in the following tested applications.

The application notes include recommended starting dilutions; optimal dilutions/concentrations should be determined by the end user.

Applications	ELISA SDS-PAGE Western blot
Form	Liquid
Additional notes	Protein concentration is above or equal to 0.05 mg/ml. Best used within three months from the date of receipt.

Preparation and Storage

Stability and Storage	Shipped on dry ice. Upon delivery aliquot and store at -80°C. Avoid freeze / thaw cycles.
------------------------------	---

pH: 8.00

Constituents: 0.3% Glutathione, 0.79% Tris HCl

General Info

Function

May play a role at early stages of development of specific neural lineages in most regions of the CNS, and of several lineages in the PNS. Essential for the generation of olfactory and autonomic neurons. Activates transcription by binding to the E box (5'-CANNTG-3').

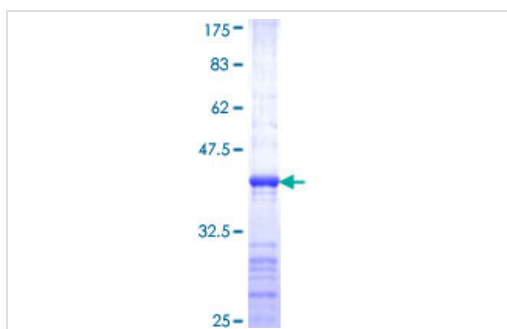
Sequence similarities

Contains 1 basic helix-loop-helix (bHLH) domain.

Cellular localization

Nucleus.

Images



12.5% SDS-PAGE analysis of ab114273 stained with Coomassie Blue.

SDS-PAGE - MASH1/Achaete-scute homolog 1 protein (ab114273)

Please note: All products are "FOR RESEARCH USE ONLY AND ARE NOT INTENDED FOR DIAGNOSTIC OR THERAPEUTIC USE"

Our Abpromise to you: Quality guaranteed and expert technical support

- Replacement or refund for products not performing as stated on the datasheet
- Valid for 12 months from date of delivery
- Response to your inquiry within 24 hours
- We provide support in Chinese, English, French, German, Japanese and Spanish
- Extensive multi-media technical resources to help you
- We investigate all quality concerns to ensure our products perform to the highest standards

If the product does not perform as described on this datasheet, we will offer a refund or replacement. For full details of the Abpromise, please visit <http://www.abcam.com/abpromise> or contact our technical team.

Terms and conditions

- Guarantee only valid for products bought direct from Abcam or one of our authorized distributors