

Product datasheet

Recombinant Human Macrophage Inflammatory Protein 3 beta ab97899

1 Image

Overview

<b>Product name</b>	Recombinant Human Macrophage Inflammatory Protein 3 beta
<b>Protein length</b>	Full length protein

Description

<b>Nature</b>	Recombinant
<b>Source</b>	Escherichia coli

Amino Acid Sequence

<b>Accession</b>	<a href="#">Q99731</a>
<b>Species</b>	Human
<b>Sequence</b>	<i>MASMTGGQQM GRGSHMGTND AEDCCLSVTQ KPIPGYIVRN FHYLLIKDGC RVPVVFTTL RGRQLCAPPD QPWVERIIQR LQRTSAKMKR RSS</i>
<b>Molecular weight</b>	10 kDa including tags
<b>Amino acids</b>	22 to 98
<b>Tags</b>	T7 tag N-Terminus

Specifications

Our [Abpromise guarantee](#) covers the use of **ab97899** in the following tested applications.

The application notes include recommended starting dilutions; optimal dilutions/concentrations should be determined by the end user.

<b>Applications</b>	SDS-PAGE Mass Spectrometry
<b>Endotoxin level</b>	< 1.000 Eu/µg
<b>Mass spectrometry</b>	MALDI-TOF-TOF
<b>Purity</b>	> 95 % SDS-PAGE. ab97899 is purified by conventional chromatography, after refolding of the isolated inclusion bodies in a renaturation buffer.
<b>Form</b>	Liquid

## Preparation and Storage

### Stability and Storage

Shipped at 4°C. Upon delivery aliquot and store at -20°C or -80°C. Avoid repeated freeze / thaw cycles.

Preservative: None

Constituents: 10% Glycerol, PBS, pH 7.4

## General Info

### Function

May play a role not only in inflammatory and immunological responses but also in normal lymphocyte recirculation and homing. May play an important role in trafficking of T-cells in thymus, and T-cell and B-cell migration to secondary lymphoid organs. Specifically binds to chemokine receptor CCR7. Recombinant CCL19 shows potent chemotactic activity for T-cells and B-cells but not for granulocytes and monocytes.

### Tissue specificity

Expressed at high levels in the lymph nodes, thymus and appendix. Intermediate levels seen in colon and trachea, while low levels found in spleen, small intestine, lung, kidney and stomach.

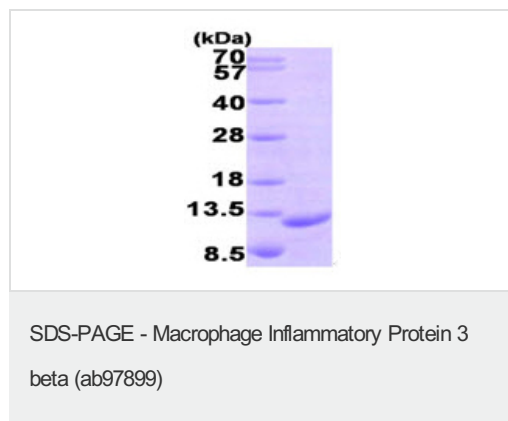
### Sequence similarities

Belongs to the intercrine beta (chemokine CC) family.

### Cellular localization

Secreted.

## Images



15% SDS-PAGE showing ab97899 at approximately 10.4kDa (3µg).

**Please note:** All products are "FOR RESEARCH USE ONLY AND ARE NOT INTENDED FOR DIAGNOSTIC OR THERAPEUTIC USE"

## Our Abpromise to you: Quality guaranteed and expert technical support

- Replacement or refund for products not performing as stated on the datasheet
- Valid for 12 months from date of delivery
- Response to your inquiry within 24 hours
- We provide support in Chinese, English, French, German, Japanese and Spanish
- Extensive multi-media technical resources to help you
- We investigate all quality concerns to ensure our products perform to the highest standards

If the product does not perform as described on this datasheet, we will offer a refund or replacement. For full details of the Abpromise, please visit <http://www.abcam.com/abpromise> or contact our technical team.

## Terms and conditions

---

- Guarantee only valid for products bought direct from Abcam or one of our authorized distributors