

Product datasheet

# Recombinant Human Metabotropic Glutamate Receptor 8 protein ab114473

1 Image

Overview

---

**Product name** Recombinant Human Metabotropic Glutamate Receptor 8 protein  
**Protein length** Protein fragment

Description

---

**Nature** Recombinant  
**Source** Wheat germ

Amino Acid Sequence

**Accession** [O00222](#)  
**Species** Human  
**Sequence** KVIGHWTNQLHLKVEDMQWAHREHHPASVCSLPCKPGERKKTVMKGVPCCHWCERCEGYNYQVDELSCELCPLDQRPNMNRRTGCQLIPII  
**Molecular weight** 36 kDa including tags  
**Amino acids** 486 to 575

Specifications

---

Our [Abpromise guarantee](#) covers the use of **ab114473** in the following tested applications.

The application notes include recommended starting dilutions; optimal dilutions/concentrations should be determined by the end user.

**Applications** ELISA  
 SDS-PAGE  
 Western blot

**Form** Liquid

**Additional notes** Protein concentration is above or equal to 0.05 mg/ml.  
 Best used within three months from the date of receipt.

Preparation and Storage

---

**Stability and Storage** Shipped on dry ice. Upon delivery aliquot and store at -80°C. Avoid freeze / thaw cycles.

pH: 8.00

Constituents: 0.3% Glutathione, 0.79% Tris HCl

## General Info

### Function

Receptor for glutamate. The activity of this receptor is mediated by a G-protein that inhibits adenylate cyclase activity.

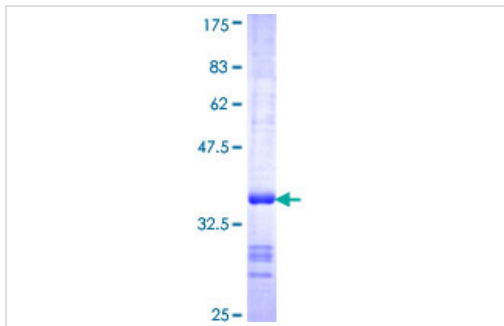
### Sequence similarities

Belongs to the G-protein coupled receptor 3 family.

### Cellular localization

Cell membrane.

## Images



12.5% SDS-PAGE analysis of ab114473 stained with Coomassie Blue.

SDS-PAGE - Metabotropic Glutamate Receptor 8 protein (ab114473)

**Please note:** All products are "FOR RESEARCH USE ONLY AND ARE NOT INTENDED FOR DIAGNOSTIC OR THERAPEUTIC USE"

## Our Abpromise to you: Quality guaranteed and expert technical support

- Replacement or refund for products not performing as stated on the datasheet
- Valid for 12 months from date of delivery
- Response to your inquiry within 24 hours
- We provide support in Chinese, English, French, German, Japanese and Spanish
- Extensive multi-media technical resources to help you
- We investigate all quality concerns to ensure our products perform to the highest standards

If the product does not perform as described on this datasheet, we will offer a refund or replacement. For full details of the Abpromise, please visit <http://www.abcam.com/abpromise> or contact our technical team.

## Terms and conditions

- Guarantee only valid for products bought direct from Abcam or one of our authorized distributors