

## Product datasheet

# Recombinant Human Mitochondrial Pyruvate dehydrogenase kinase 1 protein ab86986

[2 Images](#)

### Overview

<b>Product name</b>	Recombinant Human Mitochondrial Pyruvate dehydrogenase kinase 1 protein
<b>Protein length</b>	Full length protein

### Description

<b>Nature</b>	Recombinant
<b>Source</b>	Escherichia coli

### Amino Acid Sequence

<b>Species</b>	Human
<b>Sequence</b>	<p>MGSSHHHHHH SSGLVPRGSH MSSDSGSSPA  SERGVPGQVD FYARFSPSPL SMKQFLDFGS  VNACEKTSFM FLRQELPVRL ANIMKEISLL  PDNLLRTPSV QLVQSWYQS LQELDFKDK  SAEDAKAYD FTDTVIRIRN RHNDVIPTMA  QGVIEYKESF GVDPVTSQNV QYFLDRFYMS  RISIRMLLNQ HSLLFGGK GK GSPSHRKHIG  SINPNCNVLE VIKDGYENAR RLCDLYINS  PELELEELNA KSPGQPIQVV YVPSHLYHMV  FELFKNAMRA TMEHHANRGV YPPIQVHVTL  GNEDLTVKMS DRGGGVPLRK IDRLFNYMYS  TAPRPRVETS RAVPLAGFGY GLPISRLYAQ  YFQGDLKLYS LEGYGTDAVI YIKALSTDSI  ERLPVYNKAA WKHYNTNHEA DDWCVPSREP  KDMTFRSA</p>

### Specifications

Our [Abpromise guarantee](#) covers the use of **ab86986** in the following tested applications.

The application notes include recommended starting dilutions; optimal dilutions/concentrations should be determined by the end user.

<b>Applications</b>	SDS-PAGE
	Western blot

**Purity** > 95 % SDS-PAGE.

**Form** Liquid

### Preparation and Storage

---

**Stability and Storage** Shipped at 4°C. Store at +4°C short term (1-2 weeks). Upon delivery aliquot. Store at -20°C or -80°C. Avoid freeze / thaw cycle.

Preservative: None

Constituents: 40% Glycerol, 20mM Tris HCl, 100mM Sodium chloride, 1mM Magnesium chloride, 0.5mM DTT, 0.1mM PMSF, 0.1mM EDTA, pH 7.0

### General Info

---

**Function** Inhibits the mitochondrial pyruvate dehydrogenase complex by phosphorylation of the E1 alpha subunit, thus contributing to the regulation of glucose metabolism.

**Tissue specificity** Expressed predominantly in the heart.

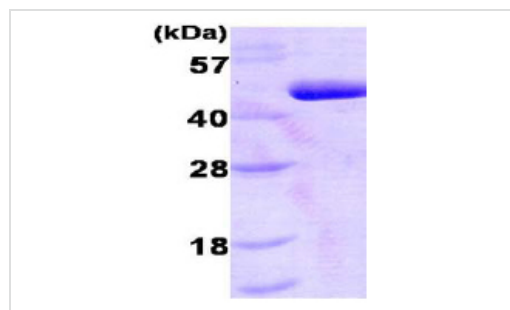
**Sequence similarities** Belongs to the PDK/BCKDK protein kinase family.  
Contains 1 histidine kinase domain.

**Cellular localization** Mitochondrion matrix.

---

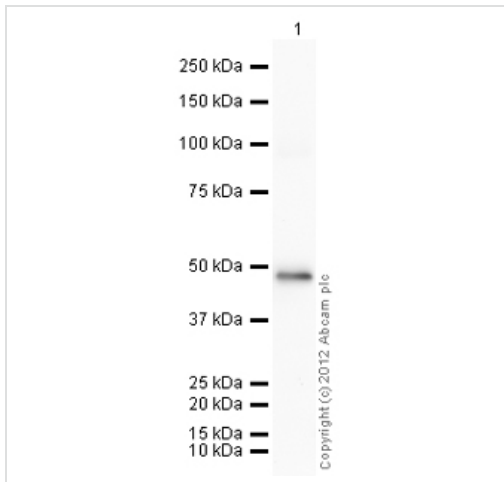
### Images

---



15% SDS-PAGE showing ab86986 at approximately 48.6kDa (3µg).

SDS-PAGE - Pyruvate dehydrogenase kinase 1 protein (His tag) (ab86986)



Western blot - Anti-Mitochondrial Pyruvate dehydrogenase kinase 1 antibody (

[ab73335](#)

)

Anti-Mitochondrial Pyruvate dehydrogenase kinase 1 antibody ([ab73335](#)) at 1 µg/ml + Recombinant Human TGFBI protein ([ab86989](#)) at 0.01 µg

### Secondary

Goat Anti-Rabbit IgG H&L (HRP) preadsorbed ([ab97080](#)) at 1/5000 dilution

Developed using the ECL technique.

Performed under reducing conditions.

**Predicted band size:** 49 kDa

**Exposure time:** 30 seconds

**Please note:** All products are "FOR RESEARCH USE ONLY AND ARE NOT INTENDED FOR DIAGNOSTIC OR THERAPEUTIC USE"

### Our Abpromise to you: Quality guaranteed and expert technical support

- Replacement or refund for products not performing as stated on the datasheet
- Valid for 12 months from date of delivery
- Response to your inquiry within 24 hours
- We provide support in Chinese, English, French, German, Japanese and Spanish
- Extensive multi-media technical resources to help you
- We investigate all quality concerns to ensure our products perform to the highest standards

If the product does not perform as described on this datasheet, we will offer a refund or replacement. For full details of the Abpromise, please visit <http://www.abcam.com/abpromise> or contact our technical team.

### Terms and conditions

- Guarantee only valid for products bought direct from Abcam or one of our authorized distributors