

Product datasheet

Recombinant Human Ornithine Carbamoyltransferase protein ab123452

2 Images

Overview

Product name Recombinant Human Ornithine Carbamoyltransferase protein
Protein length Full length protein

Description

Nature Recombinant
Source Escherichia coli

Amino Acid Sequence

Accession [P00480](#)
Species Human
Sequence MLFNLRIILLN NAAFRNGHNF MVRNFRCGQP
 LQNKVQLKGR DLLTLKNFTG EEIKYMLWLS
 ADLKFRKQK GEYLP LLQ GK SLGMIFEKRS
 TRTRLSTETG FALLGGHPCF LTTQDIHLGV
 NESLTD TARV LSSMADAVLA RVYKQSDLDT
 LAKEASIIPII NGLSDLYHPI QILADYLT LQ EHYSSLKGLT
 LSWIGDGNNI LHSIMMSAAK FGMHLQAATP
 KGYEPDASVT KLAEQYAKEN GTKLLL TNDP
 LEAAHGGNVL ITDTWISMGQ EEEKKKRLQA
 FQGYQV TMKT AKVAASDWTF LHCLPRKPEE
 VDDEVFYS PR SLVFPEAENR KWTIMAVMVS
 LLTDYSPQLQKPKF

Molecular weight 40 kDa
Amino acids 1 to 354
Tags His tag C-Terminus

Specifications

Our [Abpromise guarantee](#) covers the use of **ab123452** in the following tested applications.
 The application notes include recommended starting dilutions; optimal dilutions/concentrations should be determined by the end user.

Applications SDS-PAGE

	Western blot
	ELISA
Purity	> 80 % SDS-PAGE.
Form	Liquid
Additional notes	Product was previously marketed under the MitoSciences sub-brand.

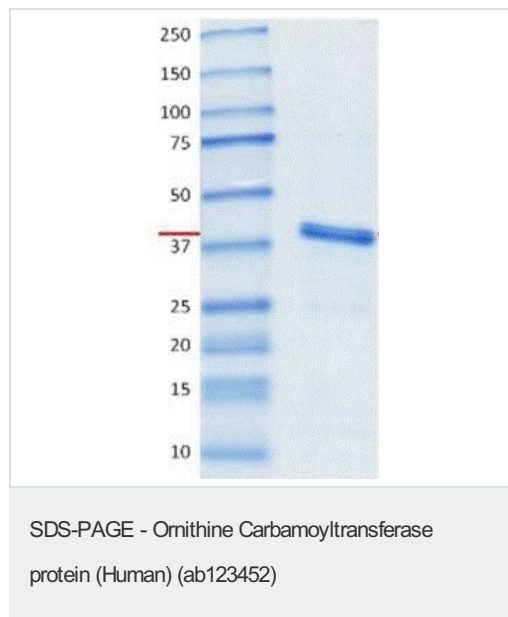
Preparation and Storage

Stability and Storage	Shipped on dry ice. Upon delivery aliquot and store at -80°C. Avoid freeze / thaw cycles. Constituents: 0.79% Tris HCl, 0.15% EDTA, 10% Glycerol, 0.88% Sodium chloride
------------------------------	--

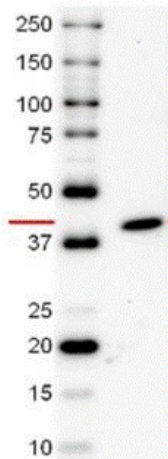
General Info

Tissue specificity	Mainly expressed in liver and intestinal mucosa.
Pathway	Nitrogen metabolism; urea cycle; L-citrulline from L-ornithine and carbamoyl phosphate: step 1/1.
Involvement in disease	Ornithine carbamoyltransferase deficiency
Sequence similarities	Belongs to the ATCase/OTCase family.
Post-translational modifications	Acetylation at Lys-88 negatively regulates ornithine carbamoyltransferase activity in response to nutrient signals.
Cellular localization	Mitochondrion matrix.

Images



10-20% acrylamide separation gel showing ab123452 at approximately 40kDa (1µg).



Western blot - Ornithine Carbamoyltransferase protein (Human) (ab123452)

Anti-Ornithine Carbamoyltransferase antibody (ab86665) at 0.5 µg/ml + Recombinant Human Ornithine Carbamoyltransferase protein (ab123452) at 0.01 µg

Secondary

Goat polyclonal to Rabbit IgG – H&L – Pre-Adsorbed (HRP) at 1/10000 dilution

Developed using the ECL technique.

Predicted band size: 40 kDa

Observed band size: 40 kDa

Exposure time: 5 minutes

Please note: All products are "FOR RESEARCH USE ONLY AND ARE NOT INTENDED FOR DIAGNOSTIC OR THERAPEUTIC USE"

Our Abpromise to you: Quality guaranteed and expert technical support

- Replacement or refund for products not performing as stated on the datasheet
- Valid for 12 months from date of delivery
- Response to your inquiry within 24 hours
- We provide support in Chinese, English, French, German, Japanese and Spanish
- Extensive multi-media technical resources to help you
- We investigate all quality concerns to ensure our products perform to the highest standards

If the product does not perform as described on this datasheet, we will offer a refund or replacement. For full details of the Abpromise, please visit <http://www.abcam.com/abpromise> or contact our technical team.

Terms and conditions

- Guarantee only valid for products bought direct from Abcam or one of our authorized distributors