

## Product datasheet

# Recombinant Human PLCL2 protein ab91794

1 Image

### Overview

|                       |                                 |
|-----------------------|---------------------------------|
| <b>Product name</b>   | Recombinant Human PLCL2 protein |
| <b>Protein length</b> | Protein fragment                |

### Description

|               |                  |
|---------------|------------------|
| <b>Nature</b> | Recombinant      |
| <b>Source</b> | Escherichia coli |

### Amino Acid Sequence

|                    |  |
|--------------------|--|
| <b>Species</b>     | Human  |
| <b>Sequence</b>    | <p>MRIDSSNMNPQDFWKCGCQVAMNFQTPGLMMDLNIGWFRQNGNCGYVLR<br/>           PA<br/>           IMREEVSFFSANTKDSVPGVSPQLLHIKISGQNFPPKPKGSGAKGD<br/>           VVDPYV<br/>           YVEIHGIPADCAEQRTKTVHQNGDAPIFDESFEFQINLPELA<br/>           MVRFVVLDDD<br/>           YIGDEFIQYTIPFECLQTGYRHVPLQSLTGEVLAHAS<br/>           LFVHVAITNRRGGG<br/>           KPHKRGLSVRKGKKSREYASLRTLWIKTVDEVFK<br/>           NAQPPIRDATDLRENMQN<br/>           AVVSFKELCGLSSVANLMQCMLAVSPRFLG<br/>           PDNTPLVVLNLSEQYPTMELQG<br/>           MPEVLKKIVTTYDMMIQSLKALIEN<br/>           ADAVYEKMHQCQAAMEFHEHLHSIG<br/>           TKEGLKERKLQKAVESFTWNIT<br/>           ILKGQADLLKYAKNETLENLKQIHFAAVSC<br/>           GLNKPVTENADVQKPRRS LEVIPEKANDETGE</p> |
| <b>Amino acids</b> | 554 to 1001  |

### Specifications

Our [Abpromise guarantee](#) covers the use of **ab91794** in the following tested applications.

The application notes include recommended starting dilutions; optimal dilutions/concentrations should be determined by the end user.

|                     |          |
|---------------------|----------|
| <b>Applications</b> | SDS-PAGE |
|---------------------|----------|

Mass Spectrometry

**Form** Lyophilised

**Additional notes** Protein Identity confirmed by Mass Spectrometry (MS/MS) (acquired on initial reference batch).

### Preparation and Storage

---

**Stability and Storage** Shipped at 4°C. Upon delivery aliquot and store at -80°C. Avoid freeze / thaw cycles.  
Preservative: None  
Constituents: 0.5% Trehalose, 6M Urea, 100mM Sodium phosphate, 10mM Sodium chloride, pH 4.5

**Reconstitution** Reconstitute with 106 µl aqua dest.

### General Info

---

**Function** May play an role in the regulation of Ins(1,4,5)P3 around the endoplasmic reticulum.

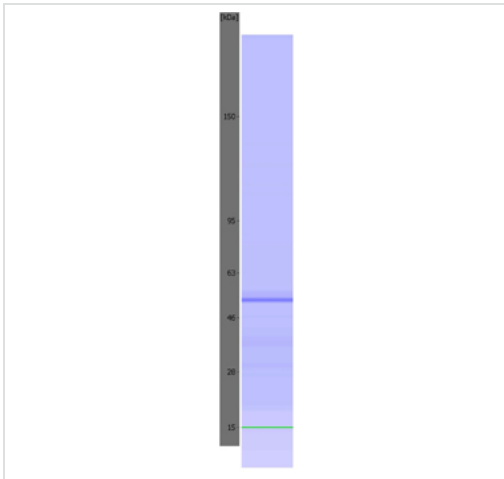
**Sequence similarities** Contains 1 C2 domain.  
Contains 1 PH domain.  
Contains 1 PI-PLC X-box domain.  
Contains 1 PI-PLC Y-box domain.

**Cellular localization** Cytoplasm. Predominantly localized to perinuclear areas in both myoblast and myotube C2C12 cells.

---

### Images

---



SDS-PAGE - PLCL2 protein (Tagged-His Tag)  
(ab91794)

The image shows an electrophoretic assay performed using an Agilent 5100 ALP. In some images coloured control bands can be seen at 15 kDa (green) and/or 240 kDa (purple). The protein-specific band is blue.

**Please note:** All products are "FOR RESEARCH USE ONLY AND ARE NOT INTENDED FOR DIAGNOSTIC OR THERAPEUTIC USE"

**Our Abpromise to you: Quality guaranteed and expert technical support**

---

- Replacement or refund for products not performing as stated on the datasheet
- Valid for 12 months from date of delivery
- Response to your inquiry within 24 hours
  
- We provide support in Chinese, English, French, German, Japanese and Spanish
- Extensive multi-media technical resources to help you
- We investigate all quality concerns to ensure our products perform to the highest standards

If the product does not perform as described on this datasheet, we will offer a refund or replacement. For full details of the Abpromise, please visit <http://www.abcam.com/abpromise> or contact our technical team.

### **Terms and conditions**

---

- Guarantee only valid for products bought direct from Abcam or one of our authorized distributors