

Product datasheet

Recombinant Human Protein phosphatase 1 inhibitor subunit 2 ab114835

1 Image

Overview

Product name	Recombinant Human Protein phosphatase 1 inhibitor subunit 2
Protein length	Full length protein

Description

Nature	Recombinant
Source	Wheat germ

Amino Acid Sequence

Accession	P41236
Species	Human
Sequence	MAASTASHRPIKGILKNKTSTTSSMVASAEQPRGNVDEELSKKSQKWDEM NILATYHPADKDYGLMKIDEPSTPYHSMGDDDEDACSDTEATEAMAPDIL ARKLAAAEGLEPKYRIQEQESSGEEDSDLSPEEREKKRQFEMKRKLHYNE GLNIKLARQLISKDLHDDDEDEEMLETADGESMNTTEESNQGSTPSDQQQN KLRSS
Molecular weight	49 kDa including tags
Amino acids	1 to 205

Specifications

Our [Abpromise guarantee](#) covers the use of **ab114835** in the following tested applications.

The application notes include recommended starting dilutions; optimal dilutions/concentrations should be determined by the end user.

Applications	ELISA SDS-PAGE Western blot
Form	Liquid
Additional notes	Protein concentration is above or equal to 0.05 mg/ml. Best used within three months from the date of receipt.

Preparation and Storage

Stability and Storage

Shipped on dry ice. Upon delivery aliquot and store at -80°C. Avoid freeze / thaw cycles.

pH: 8.00

Constituents: 0.3% Glutathione, 0.79% Tris HCl

General Info

Function

Inhibitor of protein-phosphatase 1.

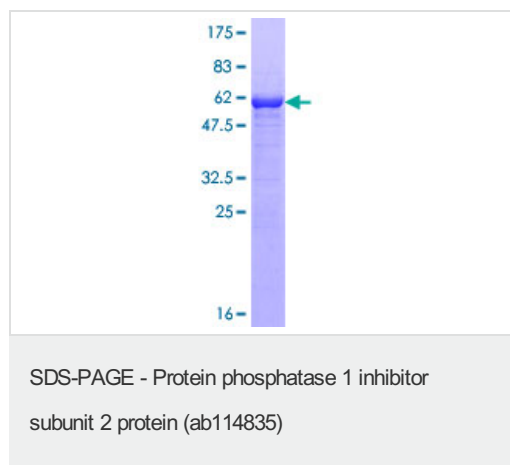
Sequence similarities

Belongs to the protein phosphatase inhibitor 2 family.

Post-translational modifications

Phosphorylation on Thr-73 by GSK3 activates PP1 by dissociating the PP1-PPP1R2 complex (By similarity). Phosphorylation on Ser-44 by ATM activates PP1 by dissociating the PP1-PPP1R2 complex.

Images



ab114835 analysed on a 12.5% SDS-PAGE gel stained with Coomassie Blue.

Please note: All products are "FOR RESEARCH USE ONLY AND ARE NOT INTENDED FOR DIAGNOSTIC OR THERAPEUTIC USE"

Our Abpromise to you: Quality guaranteed and expert technical support

- Replacement or refund for products not performing as stated on the datasheet
- Valid for 12 months from date of delivery
- Response to your inquiry within 24 hours
- We provide support in Chinese, English, French, German, Japanese and Spanish
- Extensive multi-media technical resources to help you
- We investigate all quality concerns to ensure our products perform to the highest standards

If the product does not perform as described on this datasheet, we will offer a refund or replacement. For full details of the Abpromise, please visit <http://www.abcam.com/abpromise> or contact our technical team.

Terms and conditions

- Guarantee only valid for products bought direct from Abcam or one of our authorized distributors