

Product datasheet

Recombinant Human RALY protein (denatured)  
 ab187463

1 Image

Overview

---

<b>Product name</b>	Recombinant Human RALY protein (denatured)
<b>Protein length</b>	Full length protein
<b>Description</b>	Recombinant Human RALY protein

Description

---

<b>Nature</b>	Recombinant
<b>Source</b>	Escherichia coli

Amino Acid Sequence

<b>Accession</b>	<a href="#">Q9UKM9</a>
<b>Species</b>	Human
<b>Sequence</b>	<p>MGSSHHHHHH SSGLVPRGSH MGSMSLKLQA          SNVTNKNDPK SINSRVFIGN LNTALVKKSD          VETIFSKYGR VAGCSVHKGY AFVQYSNERH          ARAAVLGENG RVLAGQTLDI NMAGEPKPDR          PKGLKRAASA IYSGYIFDYD YRDDFYDRL          FDYRGRLSPV PVPRAVPVKR PRVTVPLVRR          VKTNVPVKLF ARSTAVTTSS AKIKLKSEL          QAIKTELTQI KSNIDALLSR LEQIAAEQKA          NPDGKKKGDG GGAGGGGGGG GSGGGGSGGG          GGGGSSRPPA PQENTTSEAG LPQGEARTRD          DGDEEGLLTH SEEELEHSQD TDADDGALQ</p>
<b>Molecular weight</b>	35 kDa including tags
<b>Amino acids</b>	1 to 306
<b>Tags</b>	His tag N-Terminus
<b>Additional sequence information</b>	(NCBI Accession No.: NP_057951)

Specifications

---

Our [Abpromise guarantee](#) covers the use of **ab187463** in the following tested applications.

The application notes include recommended starting dilutions; optimal dilutions/concentrations should be determined by the end user.

<b>Applications</b>	SDS-PAGE
<b>Purity</b>	>90% by SDS-PAGE.
<b>Form</b>	Liquid

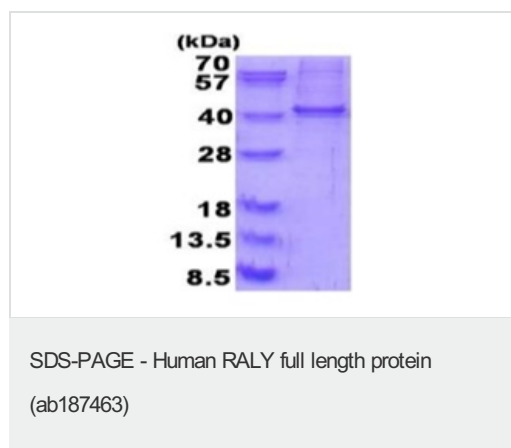
## Preparation and Storage

<b>Stability and Storage</b>	Shipped at 4°C. Store at +4°C short term (1-2 weeks). Upon delivery aliquot. Store at -20°C or -80°C. Avoid freeze / thaw cycle. pH: 8 Constituents: 0.32% Tris HCl, 10% Glycerol
------------------------------	---

## General Info

<b>Function</b>	Probable-RNA binding protein. Could be a heterogeneous nuclear ribonucleoprotein (hnRNP). May be involved in pre-mRNA splicing.
<b>Tissue specificity</b>	Expressed in heart, brain, lung, liver, skeletal muscle, kidney and pancreas. Weakly expressed in placenta.
<b>Sequence similarities</b>	Belongs to the RRM HNRPC family. RALY subfamily. Contains 1 RRM (RNA recognition motif) domain.
<b>Post-translational modifications</b>	Phosphorylated upon DNA damage, probably by ATM or ATR.
<b>Cellular localization</b>	Nucleus.

## Images



15% SDS PAGE analysis of ab187463 (3µg).

**Please note:** All products are "FOR RESEARCH USE ONLY AND ARE NOT INTENDED FOR DIAGNOSTIC OR THERAPEUTIC USE"

## Our Abpromise to you: Quality guaranteed and expert technical support

- Replacement or refund for products not performing as stated on the datasheet

- Valid for 12 months from date of delivery
- Response to your inquiry within 24 hours
  
- We provide support in Chinese, English, French, German, Japanese and Spanish
- Extensive multi-media technical resources to help you
- We investigate all quality concerns to ensure our products perform to the highest standards

If the product does not perform as described on this datasheet, we will offer a refund or replacement. For full details of the Abpromise, please visit <http://www.abcam.com/abpromise> or contact our technical team.

### **Terms and conditions**

---

- Guarantee only valid for products bought direct from Abcam or one of our authorized distributors