

Product datasheet

Recombinant Human SAR1 protein ab87626

1 Image

Overview

Product name	Recombinant Human SAR1 protein
Protein length	Full length protein

Description

Nature	Recombinant
Source	Escherichia coli

Amino Acid Sequence

Species	Human
Sequence	MGSSHHHHHH SSGLVPRGSH MSFIFEWYN GFSSVLQFLG LYKKSGLVF LGLDNAGKTT LLHMLKDDRL GQHVPTLHPT SEELTIAGMT FTFDLGGHE QARRVWKNYL PAINGMFLV DCADHSRLVE SKVELNALMT DETISNPIL ILGNKIDRTD AISEEKLREI FGLYGQTTGK GNVTLKELNA RPMEVFMCSV LKRQGYGEGF RWLSQYID

Specifications

Our [Abpromise guarantee](#) covers the use of **ab87626** in the following tested applications.

The application notes include recommended starting dilutions; optimal dilutions/concentrations should be determined by the end user.

Applications	SDS-PAGE
Purity	> 90 % SDS-PAGE. ab87626 is purified using conventional chromatography techniques.
Form	Liquid

Preparation and Storage

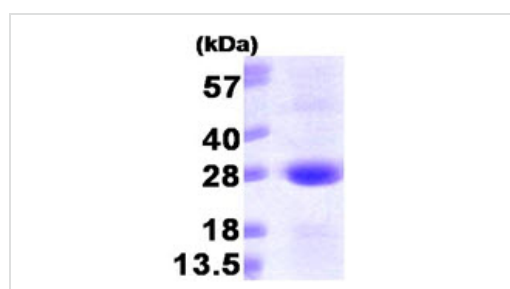
Stability and Storage	Shipped at 4°C. Upon delivery aliquot and store at -20°C or -80°C. Avoid repeated freeze / thaw cycles. Preservative: None
------------------------------	---

Constituents: 10% Glycerol, 20mM Tris HCl, 1mM DTT, pH 8.0

General Info

Function	Involved in transport from the endoplasmic reticulum to the Golgi apparatus (By similarity). Required to maintain SEC16A localization at discrete locations on the ER membrane perhaps by preventing its dissociation. SAR1A-GTP-dependent assembly of SEC16A on the ER membrane forms an organized scaffold defining endoplasmic reticulum exit sites (ERES).
Sequence similarities	Belongs to the small GTPase superfamily. SAR1 family.
Cellular localization	Endoplasmic reticulum. Golgi apparatus.

Images



15% SDS-PAGE showing ab87626 at approximately 24.5kDa (3µg).

SDS-PAGE - SAR1 protein (His tag) (ab87626)

Please note: All products are "FOR RESEARCH USE ONLY AND ARE NOT INTENDED FOR DIAGNOSTIC OR THERAPEUTIC USE"

Our Abpromise to you: Quality guaranteed and expert technical support

- Replacement or refund for products not performing as stated on the datasheet
- Valid for 12 months from date of delivery
- Response to your inquiry within 24 hours
- We provide support in Chinese, English, French, German, Japanese and Spanish
- Extensive multi-media technical resources to help you
- We investigate all quality concerns to ensure our products perform to the highest standards

If the product does not perform as described on this datasheet, we will offer a refund or replacement. For full details of the Abpromise, please visit <http://www.abcam.com/abpromise> or contact our technical team.

Terms and conditions

- Guarantee only valid for products bought direct from Abcam or one of our authorized distributors