

Product datasheet

Recombinant Human SERPINB1 protein **ab114775**

1 Image

Overview

---

<b>Product name</b>	Recombinant Human SERPINB1 protein
<b>Protein length</b>	Protein fragment

Description

---

<b>Nature</b>	Recombinant
<b>Source</b>	Wheat germ

Amino Acid Sequence

<b>Accession</b>	<a href="#">P30740</a>
<b>Species</b>	Human
<b>Sequence</b>	KKKFAYGYIEDLKCRVLELPYQGEELSMVILLPDDIEDESTGLKKIEEQL TLEKLHEWTKPENLDFIEVNVSLPRFKLEESYTLNSDLARLGVQDLFNSS
<b>Molecular weight</b>	37 kDa including tags
<b>Amino acids</b>	201 to 300

Specifications

---

Our [Abpromise guarantee](#) covers the use of **ab114775** in the following tested applications.

The application notes include recommended starting dilutions; optimal dilutions/concentrations should be determined by the end user.

<b>Applications</b>	ELISA SDS-PAGE Western blot
---------------------	-----------------------------------

<b>Form</b>	Liquid
-------------	--------

<b>Additional notes</b>	Protein concentration is above or equal to 0.05 mg/ml. Best used within three months from the date of receipt.
-------------------------	---

Preparation and Storage

---

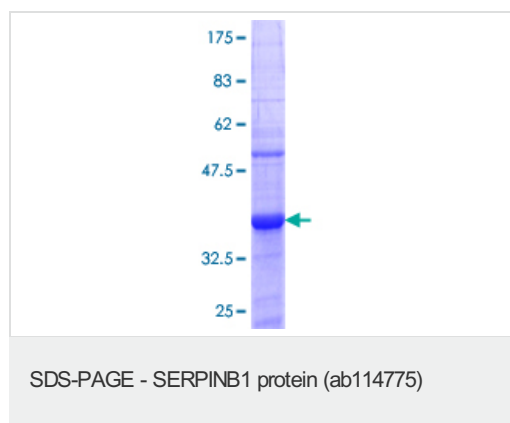
<b>Stability and Storage</b>	Shipped on dry ice. Upon delivery aliquot and store at -80°C. Avoid freeze / thaw cycles. pH: 8.00
------------------------------	---

Constituents: 0.3% Glutathione, 0.79% Tris HCl

## General Info

<b>Function</b>	Regulates the activity of the neutrophil proteases elastase, cathepsin G, proteinase-3, chymase, chymotrypsin, and kallikrein-3.
<b>Sequence similarities</b>	Belongs to the serpin family. Ov-serpin subfamily.
<b>Domain</b>	Reactive bond 1 is specific for reaction with chymotrypsin-like protease such as cathepsin G, chymotrypsin or chymase, while reactive bond 2 is specific for reaction with elastase-like protease such as neutrophyl elastase, proteinase-3, pancreatic elastase or PSA.
<b>Cellular localization</b>	Cytoplasm.

## Images



ab114775 analysed on a 12.5% SDS-PAGE gel stained with Coomassie Blue.

**Please note:** All products are "FOR RESEARCH USE ONLY AND ARE NOT INTENDED FOR DIAGNOSTIC OR THERAPEUTIC USE"

## Our Abpromise to you: Quality guaranteed and expert technical support

- Replacement or refund for products not performing as stated on the datasheet
- Valid for 12 months from date of delivery
- Response to your inquiry within 24 hours
- We provide support in Chinese, English, French, German, Japanese and Spanish
- Extensive multi-media technical resources to help you
- We investigate all quality concerns to ensure our products perform to the highest standards

If the product does not perform as described on this datasheet, we will offer a refund or replacement. For full details of the Abpromise, please visit <http://www.abcam.com/abpromise> or contact our technical team.

## Terms and conditions

- Guarantee only valid for products bought direct from Abcam or one of our authorized distributors