

Product datasheet

Recombinant Human SLP76 protein ab114697

1 Image

Overview

Product name	Recombinant Human SLP76 protein
Protein length	Full length protein

Description

Nature	Recombinant
Source	Wheat germ

Amino Acid Sequence

Accession	Q13094
Species	Human
Sequence	MALRNVPFRSEVLGWDPSLADYFKKLNKYDCEKAVKKYHIDGARFLNLT ENDIQKFPKLRVPILSKLSQEINKNEERRSIFTRKPQVPRFPEETESHEE DNGGWSSFEEDDYESPNDQDGEDDGDYESPNEEEEEAPVEDDADYEP NDEEALQNSILPAKPFNSNSMYDRPPSGKTPQQPPVPPQRPMAALPPP PAGRNHSPPLPPQTNHEEPSRSRNHKTAKLPAPSIDRSTKPPDRSLAPF DREPFTLGKKPPFSDKPSIPAGRSLGEHLPKIQKPPLPPTTERHERSSPL PGKKPPVPKHGWGPDRRENDEDDVHQRPLPQPALLPMSNTFPSRSTKPS PMNPLPSSHMPGAFSESNSFPQSASLPPYFSQGSPNRPPIRAEGRNFL PLPNKPRPPSPAEEENSLNEEWYVSYTRPEAAALRKNQDGTFLVRDS SKKTTTNPYMLVLYKDKVYNIQIRYQKESQVYLLGTGLRGKEDFLSVSD IIDYFRKMPLLLIDGKNRGSRYQCTLTHAAGYP

Molecular weight	85 kDa including tags
Amino acids	1 to 533

Specifications

Our [Abpromise guarantee](#) covers the use of **ab114697** in the following tested applications.

The application notes include recommended starting dilutions; optimal dilutions/concentrations should be determined by the end user.

Applications	ELISA SDS-PAGE Western blot
Form	Liquid

Additional notes

Protein concentration is above or equal to 0.05 mg/ml.

Preparation and Storage

Stability and Storage

Shipped on dry ice. Upon delivery aliquot and store at -80°C. Avoid freeze / thaw cycles.

pH: 8.00

Constituents: 0.3% Glutathione, 0.79% Tris HCl

General Info

Function

Involved in T-cell antigen receptor mediated signaling.

Tissue specificity

Highly expressed in spleen, thymus and peripheral blood leukocytes. Highly expressed also in T-cell and monocytic cell lines, expressed at lower level in B-cell lines. Not detected in fibroblast or neuroblastoma cell lines.

Sequence similarities

Contains 1 SAM (sterile alpha motif) domain.

Contains 1 SH2 domain.

Domain

The SH2 domain mediates interaction with SHB.

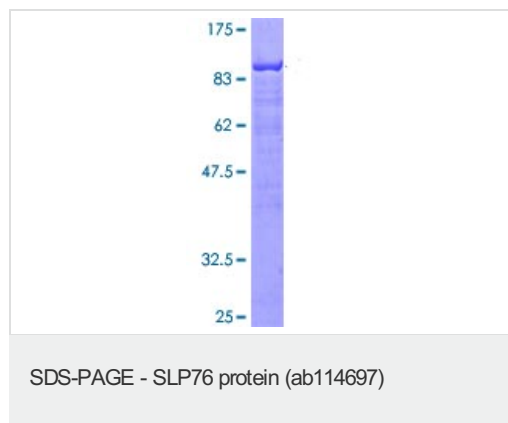
Post-translational modifications

Phosphorylated after T-cell receptor activation by ZAP-70.

Cellular localization

Cytoplasm.

Images



12.5% SDS-PAGE showing ab114697 at approximately 84.74 kDa stained with Coomassie Blue.

Please note: All products are "FOR RESEARCH USE ONLY AND ARE NOT INTENDED FOR DIAGNOSTIC OR THERAPEUTIC USE"

Our Abpromise to you: Quality guaranteed and expert technical support

- Replacement or refund for products not performing as stated on the datasheet
- Valid for 12 months from date of delivery
- Response to your inquiry within 24 hours
- We provide support in Chinese, English, French, German, Japanese and Spanish
- Extensive multi-media technical resources to help you

- We investigate all quality concerns to ensure our products perform to the highest standards

If the product does not perform as described on this datasheet, we will offer a refund or replacement. For full details of the Abpromise, please visit <http://www.abcam.com/abpromise> or contact our technical team.

Terms and conditions

- Guarantee only valid for products bought direct from Abcam or one of our authorized distributors