

Product datasheet

Recombinant Human Scn2b protein ab114773

1 Image

Overview

Product name Recombinant Human Scn2b protein
Protein length Full length protein

Description

Nature Recombinant
Source Wheat germ

Amino Acid Sequence

Accession [O60939](#)
Species Human
Sequence MHRDAWLPRPAFSLTGLSLFFSLVPPGRSMEVTVPATLNLVNGSDARLPC
 TFNSCYTVNHKQFSLNWTYQECNNCSEEMFLQFRMKIINLKLRFQDRVE
 FSGNPSKYDVSVMRLRVQPEDEGIYNCYIMNPPDRHRGHGKIHLQVLMEE
 PPERDSTVAIVVGASVGGFLAVVILVLMVVKCVRRKKEQKLSTDDLKTEE
 EGKTDGEGNPDDGAK
Molecular weight 50 kDa including tags
Amino acids 1 to 215

Specifications

Our [Abpromise guarantee](#) covers the use of **ab114773** in the following tested applications.
 The application notes include recommended starting dilutions; optimal dilutions/concentrations should be determined by the end user.

Applications ELISA
 SDS-PAGE
 Western blot
Form Liquid
Additional notes Protein concentration is above or equal to 0.05 mg/ml.
 Best used within three months from the date of receipt.

Preparation and Storage

Stability and Storage

Shipped on dry ice. Upon delivery aliquot and store at -80°C. Avoid freeze / thaw cycles.

pH: 8.00

Constituents: 0.3% Glutathione, 0.79% Tris HCl

General Info

Function

Crucial in the assembly, expression, and functional modulation of the heterotrimeric complex of the sodium channel. The subunit beta-2 causes an increase in the plasma membrane surface area and in its folding into microvilli. Interacts with TNR may play a crucial role in clustering and regulation of activity of sodium channels at nodes of Ranvier.

Tissue specificity

Brain specific.

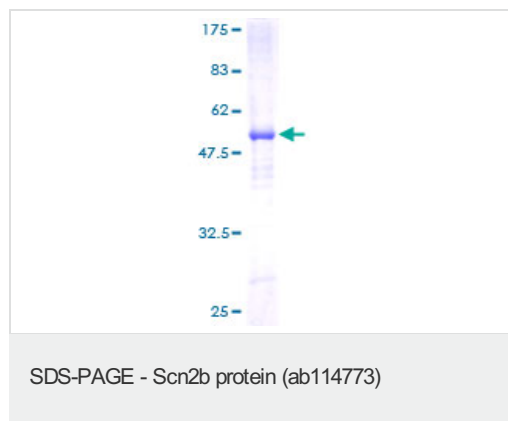
Sequence similarities

Belongs to the sodium channel auxiliary subunit SCN2B (TC 8.A.17) family.
Contains 1 Ig-like C2-type (immunoglobulin-like) domain.

Cellular localization

Membrane.

Images



ab114773 analysed on a 12.5% SDS-PAGE gel stained with Coomassie Blue.

Please note: All products are "FOR RESEARCH USE ONLY AND ARE NOT INTENDED FOR DIAGNOSTIC OR THERAPEUTIC USE"

Our Abpromise to you: Quality guaranteed and expert technical support

- Replacement or refund for products not performing as stated on the datasheet
- Valid for 12 months from date of delivery
- Response to your inquiry within 24 hours
- We provide support in Chinese, English, French, German, Japanese and Spanish
- Extensive multi-media technical resources to help you
- We investigate all quality concerns to ensure our products perform to the highest standards

If the product does not perform as described on this datasheet, we will offer a refund or replacement. For full details of the Abpromise, please visit <http://www.abcam.com/abpromise> or contact our technical team.

Terms and conditions

- Guarantee only valid for products bought direct from Abcam or one of our authorized distributors