

Product datasheet

Recombinant Rat Cystatin C protein ab63285

1 Image

Overview

Product name	Recombinant Rat Cystatin C protein
Protein length	Full length protein

Description

Nature	Recombinant
Source	Escherichia coli

Amino Acid Sequence

Species	Rat
Sequence	MRGSHHHHHH GMAS-GTSRPP PRLLGAPQEA DASEEGVQRA LDFAVSEYNK GSNDAYHSRA IQVVRARKQL VAGINYLDV EMGRTTCTKS QTNLTNCPFH DQPHLMRKAL CSFQYSVPW KGTHTLTKSS CKNA

Specifications

Our [Abpromise guarantee](#) covers the use of **ab63285** in the following tested applications.

The application notes include recommended starting dilutions; optimal dilutions/concentrations should be determined by the end user.

Applications	Western blot SDS-PAGE
Purity	> 95 % SDS-PAGE. Please filter the product by an appropriate sterile filter before using it in cell culture.
Form	Lyophilised

Preparation and Storage

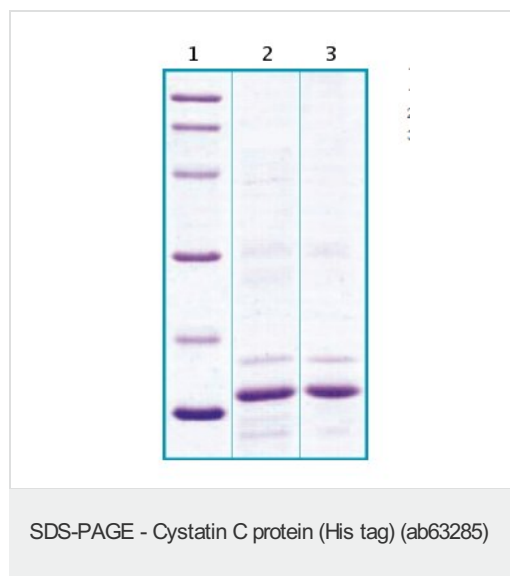
Stability and Storage	Shipped at 4°C. Upon delivery aliquot. Store at -80°C. Avoid freeze / thaw cycle. Preservative: None Constituents: 0.03 M Acetate buffer, pH 4
Reconstitution	Add 200ul of deionized water to prepare a working stock solution of approximately 0.5 mg/mL

and let the lyophilized pellet dissolve completely. For conversion into higher pH value, we recommend intensive dilution by relevant buffer to a concentration of 10µg/mL. In higher concentrations the solubility of this antigen is limited.

General Info

Function	As an inhibitor of cysteine proteinases, this protein is thought to serve an important physiological role as a local regulator of this enzyme activity.
Tissue specificity	Expressed in submandibular and sublingual saliva but not in parotid saliva (at protein level). Expressed in various body fluids, such as the cerebrospinal fluid and plasma. Expressed in highest levels in the epididymis, vas deferens, brain, thymus, and ovary and the lowest in the submandibular gland.
Involvement in disease	Amyloidosis 6 Macular degeneration, age-related, 11
Sequence similarities	Belongs to the cystatin family.
Post-translational modifications	The Thr-25 variant is O-glycosylated with a core 1 or possibly core 8 glycan. The signal peptide of the O-glycosylated Thr-25 variant is cleaved between Ala-20 and Val-21.
Cellular localization	Secreted.

Images



LANE 1. M.W. marker - 14, 21, 31, 45, 66, 97 kDa. LANE 2. reduced and heated sample, 5µg/lane. LANE 3. non-reduced and non-heated sample, 5µg/lane.

Please note: All products are "FOR RESEARCH USE ONLY AND ARE NOT INTENDED FOR DIAGNOSTIC OR THERAPEUTIC USE"

Our Abpromise to you: Quality guaranteed and expert technical support

- Replacement or refund for products not performing as stated on the datasheet
- Valid for 12 months from date of delivery
- Response to your inquiry within 24 hours
- We provide support in Chinese, English, French, German, Japanese and Spanish

- Extensive multi-media technical resources to help you
- We investigate all quality concerns to ensure our products perform to the highest standards

If the product does not perform as described on this datasheet, we will offer a refund or replacement. For full details of the Abpromise, please visit <http://www.abcam.com/abpromise> or contact our technical team.

Terms and conditions

- Guarantee only valid for products bought direct from Abcam or one of our authorized distributors