

Product datasheet

Recombinant dog Urokinase protein ab92592

1 Image

Overview

<b>Product name</b>	Recombinant dog Urokinase protein
<b>Protein length</b>	Full length protein

Description

<b>Nature</b>	Recombinant
<b>Source</b>	Insect cells

Amino Acid Sequence

<b>Species</b>	Dog
<b>Sequence</b>	SHEFHPVSSASNC SCLNNGGTCVSYKYFSNIQRCNCPKKFQGEHCEIDTSK TCYEGNGHSYRGKANTNTRGRPCLAWNSAAVLLKQYHALRPDALQLGLGK HNYCRNPDHQRKPWCYVQVGLMQLVQECTVQHCSFEKNPHSPPEKAEFQC GQKALRPRFKIIGGEFTTIENQPWF AAIYRKHRRGGSV TYQCGGSLISPCW
<b>Amino acids</b>	1 to 543

Specifications

Our [Abpromise guarantee](#) covers the use of **ab92592** in the following tested applications.

The application notes include recommended starting dilutions; optimal dilutions/concentrations should be determined by the end user.

<b>Applications</b>	Functional Studies SDS-PAGE
<b>Purity</b>	> 95 % SDS-PAGE. ab92592 is > 98% pure by SDS-PAGE.
<b>Form</b>	Liquid

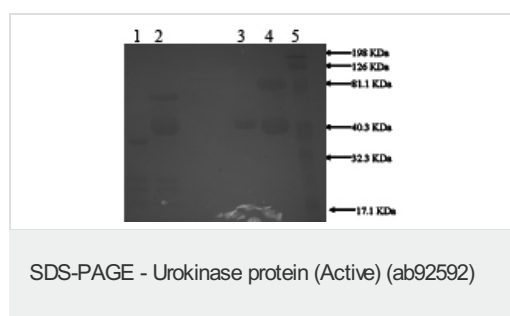
Preparation and Storage

<b>Stability and Storage</b>	Shipped on dry ice. Upon delivery aliquot and store at -80°C. Avoid freeze / thaw cycles. Preservative: None Constituents: 0.1M Sodium chloride, 0.05M Sodium acetate, 1mM EDTA, pH 5.0 This product is an active protein and may elicit a biological response in vivo, handle with caution.
------------------------------	---

## General Info

<b>Function</b>	Specifically cleave the zymogen plasminogen to form the active enzyme plasmin.
<b>Tissue specificity</b>	Expressed in the prostate gland and prostate cancers.
<b>Sequence similarities</b>	Belongs to the peptidase S1 family. Contains 1 EGF-like domain. Contains 1 kringle domain. Contains 1 peptidase S1 domain.
<b>Post-translational modifications</b>	Phosphorylation of Ser-158 and Ser-323 abolishes proadhesive ability but does not interfere with receptor binding.
<b>Cellular localization</b>	Secreted.

## Images



### 10% SDS-PAGE

Lane 1: Urokinase (3 ug) Reduced

Lane 2: Urokinase (3 ug) + CPAI (12 ug)

Reduced

Lane 3: Urokinase (3 ug) Non-reduced

Lane 4: Urokinase (3 ug) + CPAI (12 ug) Non-

reduced

Lane 5: Prestained Standard

**Please note:** All products are "FOR RESEARCH USE ONLY AND ARE NOT INTENDED FOR DIAGNOSTIC OR THERAPEUTIC USE"

## Our Abpromise to you: Quality guaranteed and expert technical support

- Replacement or refund for products not performing as stated on the datasheet
- Valid for 12 months from date of delivery
- Response to your inquiry within 24 hours
- We provide support in Chinese, English, French, German, Japanese and Spanish
- Extensive multi-media technical resources to help you
- We investigate all quality concerns to ensure our products perform to the highest standards

If the product does not perform as described on this datasheet, we will offer a refund or replacement. For full details of the Abpromise, please visit <http://www.abcam.com/abpromise> or contact our technical team.

## Terms and conditions

- Guarantee only valid for products bought direct from Abcam or one of our authorized distributors