

Product datasheet

Recombinant human BMX protein ab60877

2 Images

Overview

---

**Product name** Recombinant human BMX protein  
**Protein length** Full length protein

Description

---

**Nature** Recombinant  
**Source** Baculovirus infected Sf9 cells  
**Amino Acid Sequence**  
**Species** Human

Specifications

---

Our [Abpromise guarantee](#) covers the use of **ab60877** in the following tested applications.

The application notes include recommended starting dilutions; optimal dilutions/concentrations should be determined by the end user.

**Applications** SDS-PAGE  
 Functional Studies  
**Form** Liquid  
**Additional notes** [ab204877](#) (Poly (4:1 Glu, Tyr) peptide) can be utilized as a substrate for assessing kinase activity

Preparation and Storage

---

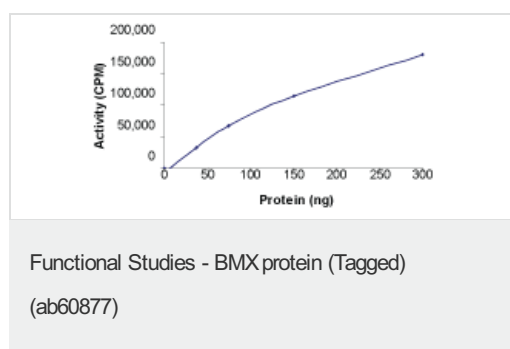
**Stability and Storage** Shipped on dry ice. Upon delivery aliquot and store at -80°C. Avoid freeze / thaw cycles.  
 Preservative: None  
 Constituents: 25% Glycerol, 50mM Tris HCl, 150mM Sodium chloride, 0.25mM DTT, 0.1mM EGTA, 0.1mM EDTA, 0.1mM PMSF, pH 7.5  
 This product is an active protein and may elicit a biological response in vivo, handle with caution.

General Info

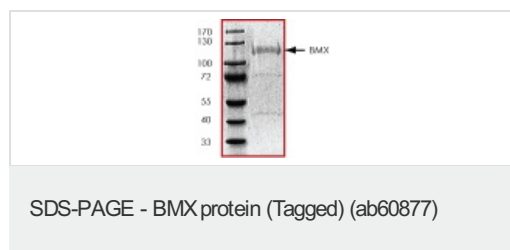
---

<b>Function</b>	Activity is required for interleukin 6 (IL-6) induced differentiation. May play a role in the growth and differentiation of hematopoietic cells. May be involved in signal transduction in endocardial and arterial endothelial cells.
<b>Tissue specificity</b>	Preferentially expressed in epithelial and endothelial cells.
<b>Sequence similarities</b>	Belongs to the protein kinase superfamily. Tyr protein kinase family. TEC subfamily. Contains 1 Btk-type zinc finger. Contains 1 PH domain. Contains 1 protein kinase domain. Contains 1 SH2 domain.
<b>Domain</b>	SH2 domain mediates interaction with RUFY1.
<b>Cellular localization</b>	Cytoplasm.

## Images



Sample Kinase Activity Plot.



ab60877 on SDS-PAGE, MW ~110 kDa.

**Please note:** All products are "FOR RESEARCH USE ONLY AND ARE NOT INTENDED FOR DIAGNOSTIC OR THERAPEUTIC USE"

## Our Abpromise to you: Quality guaranteed and expert technical support

- Replacement or refund for products not performing as stated on the datasheet
- Valid for 12 months from date of delivery
- Response to your inquiry within 24 hours
- We provide support in Chinese, English, French, German, Japanese and Spanish
- Extensive multi-media technical resources to help you
- We investigate all quality concerns to ensure our products perform to the highest standards

If the product does not perform as described on this datasheet, we will offer a refund or replacement. For full details of the Abpromise, please visit <http://www.abcam.com/abpromise> or contact our technical team.

## Terms and conditions

---

- Guarantee only valid for products bought direct from Abcam or one of our authorized distributors